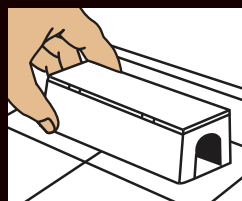




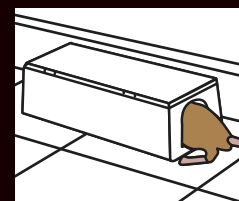
### READY

Eliminate rodent food sources – store food in sealed containers. Keep containers tightly closed.



### SET

Place out of reach of children and pets. Select tight spaces where rodents are suspected – under appliances, in cabinets, garage or loft.



### KILL

Mice will eat bait and die!

For the control of mice, indoors and outdoors.

#### Directions for use

Choosing a location:

- Place bait where it is inaccessible for children and pets
- Remove all food sources from the treatment area
- Use in areas where mouse activity is present i.e. where there is visible signs of damage/droppings

#### Application directions

- Remove the bait stations from their packaging and place horizontally against the side of a wall, with the entrance exposed. Place the stations 2-3 metres apart
- Where appropriate, secure the bait station in place to reduce the likelihood of removal by rodents
- Replace the bait station if the contents are consumed or contaminated, until no further signs of feeding appear, normally takes up to 2-3 weeks. Once rodent activity ceases remove all unused bait and dispose of safely
- Re-locate the bait stations if the contents remain untouched after 3 days

#### Precautions

Place bait where it is inaccessible for children and pets.  
**WASH HANDS AND EXPOSED SKIN** before meals and after use.  
**STORE IN ORIGINAL CONTAINER**, in a safe place.  
**KEEP CONTAINER TIGHTLY CLOSED.**  
**EMPTY CONTAINER COMPLETELY** and dispose of safely.  
**IF YOU FEEL UNWELL**, seek medical advice (show the label where possible). Wild mammals and birds may be at greater risk if this product is not used in accordance with the label.

This product is approved under the Control of Pesticides Regulations 1986 (as amended) for use as directed.  
 Use only in accordance with the directions on the label.

#### STATUTORY CONDITIONS RELATING TO USE FOR USE ONLY AS AN AMATEUR RAT AND MOUSE KILLER FOR indoor and outdoor use

**AVOID ALL CONTACT BY MOUTH**  
**PREVENT ACCESS TO BAIT** by children, birds and non-target animals particularly dogs, cats, pigs and poultry. Search for and remove rodent bodies at frequent intervals during treatment. Collect and dispose of the remains of bait and any remaining rodent bodies after treatment. All waste should be double-bagged using bin-liners or similar before disposal in a bin with a secure lid to prevent accidental poisoning of dogs, cats, birds, foxes and other wildlife, or by contacting either a specialist contractor or the Local Authority where waste bins are not provided. Do not dispose of in any other way.

This product contains substances which are known to be hazardous to the environment.  
 Do not contaminate ground water, waterbodies or watercourses with chemicals or used container. Where appropriate, secure the bait block in place to reduce likelihood of removal by rodents.

**HARMFUL TO WILDLIFE**  
**DO NOT PLACE BAIT** where food, feed or water could become contaminated  
**READ ALL PRECAUTIONS BEFORE USE**

PCS No. 95855 HSE 8979

#### Medical Advice

Bromadiolone is an indirect anticoagulant. Phytomendaione, Vitamin K1 is antidotal. Determine prothrombin times not less than eighteen hours after consumption. If elevated, administer Vitamin K1 until prothrombin time normalises.

Continue determination of prothrombin time for two weeks after withdrawal of antidote and resume treatment if elevation occurs in that time.

If swallowed, seek medical advice immediately and show this container or label.

Contains 0.005% bromadiolone.  
 Contains denatonium benzoate, a human taste deterrent which is added to help prevent accidental consumption by humans.

PRE-BAITED  
**MOUSE BAIT STATION**

KILLS IN ONE FEEDING\*



for more information visit  
[www.lovethegarden.com](http://www.lovethegarden.com)  
 or call +44 (0) 870 5301010

©2009, The Scotts Company (UK) Ltd, Salisbury House, Weyside Park, Cateshall Lane, Godalming, Surrey GU7 1XE. Tel: 0870 5301010. From Republic of Ireland, Tel: 0044 870 5301010  
 Products marked @ or ™ are trademarks of The Scotts Company LLC or its subsidiaries.  
 \*Mice can consume a lethal dose in one night's feeding, with first dead rodents appearing 3 to 5 days after feeding begins.