

PRECAUTIONS

IF YOU FEEL UNWELL, seek medical advice (show the label where possible).

WASH HANDS AND EXPOSED SKIN before meals and after use.

Keep only in the original container.

Keep container tightly closed.

KEEP IN A SAFE PLACE.

EMPTY CONTAINER COMPLETELY and dispose of safely.

Where appropriate, secure the bait sachet at its placement site to reduce the likelihood of its removal by rodents.

STATUTORY CONDITIONS RELATING TO USE:

RODENTICIDE FOR AMATEUR USE AGAINST RATS AND MICE. FOR USE INDOORS AND OUTDOORS AVOID ALL CONTACT BY MOUTH (due to choking hazard).

DO NOT PLACE BAIT where food, feed or water could be contaminated.

PREVENT ACCESS TO BAIT by children, birds and non-target animals, particularly dogs, cats, pigs, poultry.

HARMFUL TO WILDLIFE. Search for and remove rodent bodies at frequent intervals during treatment. Collect and dispose of the remains of bait and any remaining rodent bodies after treatment.

READ ALL PRECAUTIONS BEFORE USE. HSE 8957 PCS 95723

This product is approved under the Control of Pesticides Regulations 1986 for use as directed. Use only in accordance with the directions on the label.

Pelleted bait formulation containing 95%w/w powdered corn cob.



ADVANCED RAT & MOUSE KILLER

TARGETS AND KILLS RODENTS HUMANELY

Ready to use biodegradable pellets to target and kill rodents humanely. Formulated from refined plant material which disrupts the digestive system of rodents and kills them. Made from 100% natural ingredients.

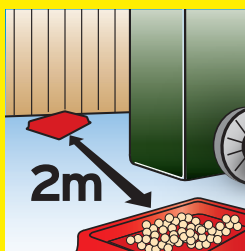
DIRECTIONS

- Remove all food sources from the treatment area
- Place pellets in the bait tray provided and position in areas with signs of rodent activity (fresh droppings, entry points to buildings, feeding area)

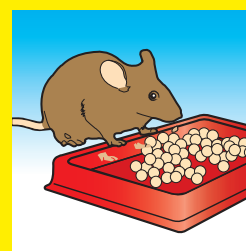
INDOOR USE



- Place up to 50 grams of bait into bait trays (fill level with the top of the bait tray)



- Place the trays 2 metres apart throughout the infested area



- Inspect feeding trays and replace any eaten pellets, until no further signs of feeding are noticed for at least 48 hours

Protect the pellets from non-target animals, water and excessively damp conditions. Pellets that have become wet should be replaced.

OUTDOOR USE

Follow instructions for indoor use, however: In damp conditions wrap up to 50 grams of bait in cling film or place in bait trays away from areas that may become wet or damp.

Protect the pellets from non-target animals, water and excessively damp conditions, pellets that have become wet should be replaced.

for more information visit
www.lovethegarden.com
or call +44 (0) 870 5301010

©2009, The Scotts Company (UK) Ltd, Salisbury House, Weyside Park, Catteshall Lane, Godalming, Surrey GU7 1XE
Tel: 0870 5301010
From Republic of Ireland; Tel: 0044 870 5301010

Products marked ® or ™ are trademarks of The Scotts Company LLC or its subsidiaries.



PREVENTION TIPS

Rats and mice venture into your home to find food and warmth. Stop invasions before they happen by following these handy tips:

- Cover all non essential openings into your home. Ensure stove and dryer vents are tightly sealed
- Store food in sealed containers, including dog and bird food
- Keep bin lids tightly closed

300g e

Batch nr. xxxx