

# Weedol®

MAPP: 19272

**RAPID WEED CONTROL READY TO USE**

- ✓ **KILLS WEEDS AND ACTIVE INGREDIENT BREAKS DOWN IN SOIL NATURALLY**
- ✓ **\*VISIBLE RESULTS MAY BE SEEN IN 2-3 HOURS**
- ✓ **READY TO REPLANT IN 3 DAYS**

## INSTRUCTIONS FOR USE

FOR USE ONLY AS A HOME GARDEN WEEDKILLER.  
READ ALL SAFETY INSTRUCTIONS BEFORE USE.

## WHEN TO USE

April – November, when weeds are actively growing • For best results apply in calm, dry, warm conditions, usually early spring or summer, when there is no risk of spray drift onto adjacent desirable plants • Most effective on young weeds less than 10 cm • This product will not provide long term control of perennial weeds • Don't apply if risk of frost, as weeds will not be actively growing • Reapply if rain falls within 3 hours • Repeat if necessary after a minimum of 7 days for larger weeds or where regrowth occurs.

**Maximum 4 applications per year.**

APR-NOV

## WHERE TO USE

Suitable for use on flower beds, vegetable patches and other permeable areas all around the garden. For the control of weeds around ornamental garden plants, trees, and areas not intended to bear vegetation. Don't direct or allow spray drift onto cultivated plants or lawns as this product destroys all green plants.

## HOW TO USE

**SHAKE WELL BEFORE USE.** We recommend wearing gloves.

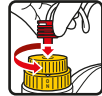
**Always ensure the container is stored and carried upright when not spraying.**

**Maximum application rate:** 30 mL/m<sup>2</sup>. 5 litres to treat 165 m<sup>2</sup>.

When spraying large areas it is easier to mark out and measure the areas before application. Apply on a calm, dry day when there is no risk of spray drift onto adjacent desirable plants.



1. Remove Power Sprayer from side clip. Remove protective strip from battery compartment to activate. Unwrap plastic cover around hose. Pull out the red connector.



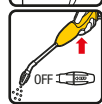
2. Insert red connector into the top of the cap and click in place. Press and twist the cap anticlockwise to 'ON' position (1/2 of a turn).



3. Flip open the Power Sprayer and lock into position. Twist nozzle to select spray setting. Spray weeds evenly, ensuring coverage on all the leaves.



4. After use, press and twist the top of the cap clockwise to the 'OFF' position.



5. Squeeze Power Sprayer trigger to empty nozzle. Turn nozzle to 'OFF' and replace sprayer in the holder without disconnecting the red connector.

**Replacing the batteries:** Open battery compartment at the bottom of Power Sprayer, remove the used batteries and dispose of safely. Replace with four new AA batteries in the correct position as marked inside the battery compartment. Securely close battery compartment door. Never mix alkaline, carbon-zinc or rechargeable batteries.



FIND OUT MORE ONLINE!

UK CA CE

\*No Glyphosate claim is provided to help distinguish from other formulas that may contain glyphosate.

## SAFETY INSTRUCTIONS

### Protection during / in use

KEEP OFF SKIN/AWAY FROM EYES.

IN CASE OF CONTACT WITH EYES, RINSE IMMEDIATELY with plenty of water and seek medical advice.

WASH OFF SPLASHES IMMEDIATELY.

DO NOT BREATHE SPRAY.

WASH HANDS AND EXPOSED SKIN AFTER USE.

### Environmental protection

To protect aquatic organisms and non-target plants do not apply on impermeable hard surfaces such as asphalt, concrete, cobblestones, tarmac, paving, patio and other situations with a high risk of run-off.

Direct spray away from ponds and other surface water bodies. Do not empty into drains. Do not contaminate water with the product or its container.

### Storage and disposal

KEEP PRODUCT IN ORIGINAL CONTAINER, tightly closed, in a safe place.

PROTECT FROM FROST. KEEP AWAY FROM FOOD, DRINK AND ANIMAL FEEDING STUFFS. KEEP PRODUCT AWAY FROM CHILDREN AND PETS. Dispose of empty container in the dustbin. Do not reuse empty bottle for any other purposes.

## RISK AND SAFETY INFORMATION

**To avoid risks to human health and the environment, comply with the instructions for use.**

Read carefully and follow all instructions.

Keep out of reach of children.

Do not eat, drink or smoke when using this product.

Do not get in eyes, on skin or on clothing. If medical advice is needed, have product container or label at hand.

Dispose of contents/container to a household waste recycling centre as hazardous waste except for empty containers which can be disposed of by recycling. Contact your local council for details.

Contains: reaction mass of 5-chloro-2-methyl-2H-isothiazolin-3-one and 2-methyl-2H-isothiazol-3-one (3:1). May produce an allergic reaction.

MAPP: 19272

Contains 43.1 g/L Pelargonic acid as an Emulsion, oil in water (EW).

PROTECT FROM FROST

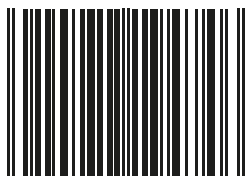


Keep children and pets away from treated areas until spray has dried

for more information visit

**weedol.co.uk**

or call +44 (0) 1276 401 300



5 010272 194746 >



BOTTLE

CAP

TRIGGER

Do Not Recycle

Do Not Recycle

Do Not Recycle