

Pollution Incident Response Management Plan (PIRMP) - Berkshire Park

Evergreen Garden Care Australia - EPL: 5190 BP101

Rev no 1.3 (02/2026)

1. Overview

1.1 Purpose	This Pollution Incident Response Management Plan (PIRMP) has been written to comply with the legislative requirements under the Protection of the Environment Operations Act 1997 (POEO Act) and the Protection of the Environment Operations (General) Regulation 2009.
1.2 Process owner	<ul style="list-style-type: none">• Site Manager (Berkshire Park)• Manufacturing and Safety Director
1.3 Overview	<p>The site is situated at:</p> <p>60 St Marys Road</p> <p>Berkshire Park, NSW, 2765</p> <p>EPL 5190 authorises the following scheduled activities to be carried out on this site:</p> <ul style="list-style-type: none">• Composting
1.4 Reference documents	Protection of the Environment Operations Act 1997 (POEO Act).
1.5 Content	<ol style="list-style-type: none">1. Overview2. Background3. Contact Details4. Incident Response Plan5. Description and likelihood of hazards6. Maps7. Staff training and safety equipment

2. Background

The purpose of this PIRMP is to improve the way pollution incidents are reported, managed and communicated to the general community over the life of the quarry.

The purpose of this plan is to:

Ensure comprehensive and timely communication about a pollution incident to staff at the premises, the Environment Protection Authority (EPA), other relevant authorities specified in the Act (such as local councils, NSW Ministry of Health, Work Cover NSW, and Fire and Rescue NSW) and people outside the facility who may be affected by the impacts of the pollution incident.

Minimise and control the risk of a pollution incident at the facility by requiring identification of risks and the development of planned actions to minimise and manage those risks

Ensure that the plan is properly implemented by trained staff, identifying persons responsible for implementing it, and ensuring that the plan is regularly tested for accuracy, currency and suitability.

3. Contact Details

The following summaries the various key personnel responsible for and authorised to activate this plan, and manager the response to the pollution incident.

Site Management Contacts

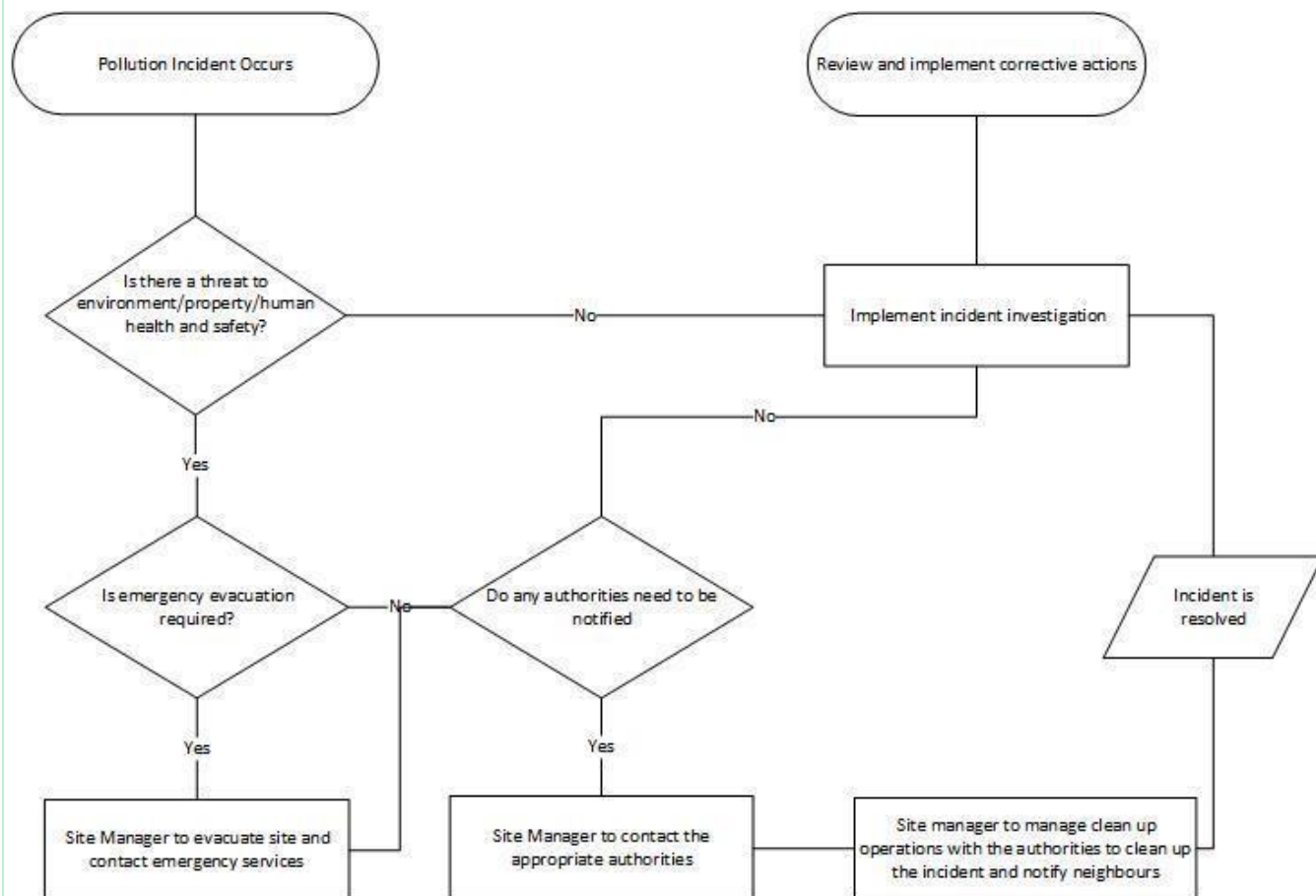
Position	Name	Phone
Site Manager	Shaun Glazier	0487 780549
Manufacturing Director	Brian Angwin	0438 435666

Authority Contacts

Authority	Phone
Emergency	000
Environment Protection Authority	131 555
Penrith City Council	4732 777
Workcover NSW	131 050
Fire and Rescue NSW	1300 729 579
Hawkesbury Hospital	4560 5555
State Emergency Service	132 500
Poisons Information Centre	131 126

4. Incident Response Plan

The following process flow documents the actions to be taken following the occurrence of the pollution incident.



*In the event that neighbours are required to be notified please ensure the following is conducted:

- Door knock to advise the affected neighbour that a pollution incident has occurred. Maintain records to ensure all neighbours have been notified
- Letter box drop advising the neighbours of the results of the incident investigations and the corrective actions put in place to reduce the likelihood of the pollution incident occurring again.

5. Description and likelihood of hazards

The following table identifies the main hazards which may present a hazard to human health or the environment associated with the activity being undertaken at the premises, the likelihood of any such hazards occurring and pre-emptive strategies to eliminate or control the likelihood of occurrence.

Risk	Description of Risk	Likelihood Rating (L/M/H)	Pre-emptive Strategy
Diesel Spill	Diesel may be spilt during the refuelling process or due to a fault with containment tanks on equipment or storage.	Low	Pre-start checks on all equipment, Annual inspection on diesel tank, bunding of diesel tank, operator training
Gas Leak	Gas may leak from the gas bottles used to power equipment	Low	Gas bottles are sourced by exchange from the supplier to ensure tanks are inspected and free from defects.
Oil Spills	Oil may be spilt due to a hydraulic failure on equipment	Low	Pre-start checks on all equipment, spill containment kits available on site.
Storage of Fertilisers	Fertilisers are stored on site and may be spilt during preparation for usage.	Low	Refer to master MSDs register held on site. Storage contained to dedicated concreted warehouse areas.
Dust	The combination of dry and windy conditions may cause dust	Low	Dust sweeper available on site to sweep accumulated dust in dry conditions.
Water Containment	Water levels in the dam may exceed containment capacity	Low	Stormwater is contained to a dam on site (via drainage channels and grates). Dam levels monitored daily. Any unusual pooling of water bodies on site is investigated.

6. Maps

The following map indicates the boundary and location of the premises.



7. Staff Training and Safety Equipment

All staff on site are subject to the requirements as specified in this plan. This is achieved through receipt of instruction or explanation on the relevant parts of this document as well as the induction process to the site. The plan is readily accessible to all staff on site.

This plan will be tested at least once every 12 months to ensure the adequacy of emergency preparedness and response to ensure it is workable and effective.

All staff are issued with their own personal protective equipment (PPE) upon commencement of work at site. PPE includes high visibility clothing/vests, safety boots, bump caps and safety glasses. Additional PPE is readily available from the site office, including hearing protection, gloves and gumboots/waders.

Other amenities on site for the protection of the workers and environment includes spill containment kits, safety showers and eye washes.

8. Attendance

Pollution Incident Response Management Plan (PIRMP)

DATE:

Present:

/Name (Print)	Signature

Training attendance copy held on file