



# Premium Plus Potting Mix

Osmocote® Professional Premium Plus Potting Mix was developed by horticultural experts especially for potting all indoor and outdoor container plants. Ideal for indoor plants, shrubs, flowers, palms, fruit trees, vegetables and herbs. It provides the ideal moisture and nutrient environment for healthier and better plants. Formulated and guaranteed to grow a plant from potting to fruit.

- Contains Osmocote® controlled release plant food – feeds plants for up to 6 months.
- Formulated with ScottsCoir™ and Next Generation water crystals, enabling the mix to hold up to 100% more water than ordinary potting mixes\*.
- Releases water to plants as needed, to avoid plant damage from over watering.
- Professional grade wetting agent added to ensure uniform wetting of mix and prevent drying out.

\*Compared to standard potting mix without coir, wetting agent or water crystals

This mix complies with the requirements of AS3743 for a premium grade potting mix

## HAZARDOUS

### COMPOSTS, POTTING MIXES AND OTHER ORGANIC MATERIALS

This product is made from organic materials, including composted pinebark, and contains living micro-organisms, including bacteria, fungi and protozoa. Also contains mineral and fertiliser additives.

### RISK

Inhalation of dust and/or liquid mists may irritate, inflame or sensitise the nose, throat and lungs resulting in illnesses ranging from hayfever or asthma, to pneumonia (e.g. Legionnaire's disease) or pneumonia-like illnesses. Direct contact with this material or its dust and/or liquid mists (bioaerosols) may cause skin irritation (dermatitis), and skin or eye infection or irritation. People particularly at risk are those suffering from asthma or allergies, and those whose immune defence systems are compromised.

### SAFETY

Avoid contact with eyes and skin. Avoid breathing dust and/or liquid mists (bioaerosols). Wear suitable protective clothing and standard duty gloves (AS/NZS 2161.2). If exposed to dust and/or liquid mists, also wear dust resistant eye protection (AS/NZS 1336) and particulate respirator (AS/NZS 1715 and AS/NZS 1716). Wash thoroughly immediately after handling. Wash work clothes regularly. Clean up by wet sweeping or vacuuming. Store this product in a cool location.

### FIRST AID

Irrigate eyes with plenty of water for 10 minutes. Wash skin with soap and water. Seek medical attention for any persistent skin, eye or respiratory symptoms.

### DISPOSAL

Follow above safety precautions and collect in containers for disposal as trade waste in accordance with local authority guidelines.

### STORE UNDER COOL CONDITIONS

For more lawn and gardening tips, and information call our Garden Advice line toll free:

1800 804 219 or visit [www.scottsaustralia.com.au](http://www.scottsaustralia.com.au)



Scotts Australia Pty Ltd  
ACN 003 123 162  
Building E, Level 2  
24-32 Lexington Drive, Bella Vista, NSW 2153  
[www.scottsaustralia.com.au](http://www.scottsaustralia.com.au)  
©2016 Licensed by the Scotts Company,  
World Rights Reserved



## Easy to use instructions

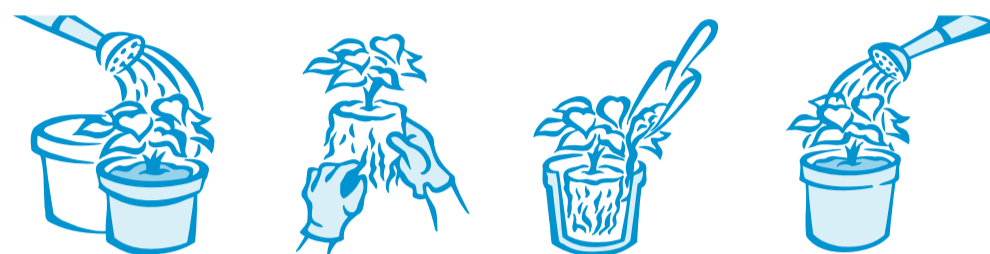
We recommend you always wear gloves when gardening.



## Where to use

Osmocote® Professional Premium Plus Potting Mix is suitable for hanging baskets, window boxes, potting bulbs and repotting of indoor and outdoor plants, shrubs and ornamentals.

## How to use



1. Use Osmocote® Professional Premium Plus Potting Mix straight from the bag. For best results, do not mix with any other material. Close the bag tightly after use.
2. Select a clean container with large drainage holes and partly fill the pot with Osmocote® Professional Premium Plus Potting Mix.
3. Turn the plant out of its existing container. Loosen the root ball and gently remove any damaged or dried out roots.
4. Place the plant in the centre of the pot. Fill in with Osmocote® Professional Premium Plus Potting Mix to within 2-3cm from the top of the pot and press lightly.
5. Tap the new container gently to allow the mixture to settle. Do not pack down.
6. Initial watering of the plant after potting is essential. Allow the excess water to drain away and place in the shade for 2-3 days to allow the plant to establish.

## Handy Hints

### ...General Growing Tips for Indoor Container Plants

- Over watering is the most common problem in growing container plants. ScottsCoir™ retains water and slowly releases moisture therefore let the mix dry to touch between waterings. When watering, thoroughly soak the mix and allow to drain. Do not allow plants to rest in drainage water.
- Most plants prefer bright, indirect sunlight. Some plants are more tolerant of low light than others. Refer to specific lighting requirements for each plant species.
- Feed with Osmocote® controlled release fertiliser during the active growing season (spring, summer and autumn). Not required within 6 months of potting mix purchase.

### ...Special Consideration for Outdoor Container Plants

- Outdoor container plants require frequent watering – as often as once per day in hot, dry conditions.
- Outdoor container plants also require more frequent feeding. Use Osmocote® controlled release fertiliser. Not required within 6 months of potting mix purchase.
- Use deep pots with drainage holes as opposed to shallow containers without drainage holes.
- Some varieties of plants, especially vegetables are better adapted for growing in containers. Check with your local plant supplier.
- A balanced fertiliser was added at the time of manufacture, but additional fertiliser may be required depending on plant needs.