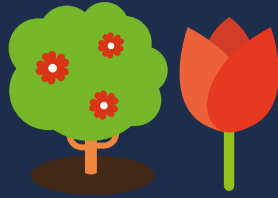


WHERE TO USE?

Roses, Trees & Shrubs

Our Rose Tree and Shrub compost contains forest by-products and green compost which is high in nutrients, perfect for roses, and also trees and shrubs.



Potting-on plants



Re-potting is best done in the spring, when plants are actively growing. Before re-potting, water plants well and allow to drain. Put fresh compost in the bottom of a new pot. Turn the old plant upside down and tap the pot sharply to release. Place the plant in the middle of the new pot and add more compost, firming lightly around the root-ball.

Beds and Borders



Dig a hole twice the size of the root ball. Part fill the hole with equal quantities of soil and compost. Ensure the plant is at the same level as in the pot.

Dividing Perennials



Divide large clumps of perennial plants by digging them carefully out of the ground, taking care not to damage the roots. Use two garden forks to prise the clump apart, or simply cut it up. Re-plant part of the clump using an equal mix of compost and soil. Use the compost in pots to grow new plants.

HOW TO USE?

Instructions for use

Use straight from the bag, it's as easy as that. When filling or potting, firm lightly. Keep the compost moist and do not let it dry out. Do not leave plants standing in water.

Storage instructions

- Keep the bag closed when in storage to prevent drying out.
- Storage from one year to another may affect performance.
- Keep away from pesticides.
- Occasionally a white mould appears on the compost. This is not harmful to your plants and should disappear naturally.

Health and safety advice



- Use in a well ventilated place and avoid breathing in dust.
- Always wear gloves when gardening
- Wash hands after use.
- Store in a cool place, away from sun.
- Open bag carefully and reseal after use.

APPROXIMATE VOLUME

How much is in the bag?



FILLS 7
HANGING BASKETS
30CM (12")



FILLS 50
SMALL POTS
12CM (5")



FILLS 10
MEDIUM POTS
22CM (9")



FILLS 5
LARGE POTS
25CM (10")

OUR STORY...

Established in 1967, Levington has been providing expertise, research and innovation into compost for over 50 years. When it comes to compost, Levington has been the gardener's choice for decades.



At our officially recognised research station in Levington, Suffolk, we are constantly innovating and testing for the best combinations of ingredients in compost to ensure your plants are strong and healthy.

WHAT IS IT?

What is Rose, Tree & Shrub compost?



The special mix secures air for the roots to breathe and holds water to help your plants grow stronger roots for roses, trees and shrubs.



Optimum **drainage** system prevents excess moisture.



Partnering with industry pioneers we are turning 25,000 tonnes of green garden waste into high quality compost every year. Stringent tests ensure that you can **grow plants that improve your environment** and make the world a more beautiful place.



Patented **wetting agent** which enables compost to soak and absorb higher levels of water without getting water logged.

SUSTAINABILITY

Responsible sourcing



We are actively working on improving the responsible sourcing profile of our compost mixes year on year. Levington compost contains forest by-products, carefully processed to help you grow plants that improve your environment and make the world a more beautiful place.

How much Peat?



We are actively involved in the management and restoration of the peatlands we harvest from.

REDUCE ▶ RE-USE ▶ RECYCLE



THIS BAG IS RECYCLABLE



LEVINGTON PRODUCTION SITES OPERATE
0% TO LANDFILL

FOR MORE INFORMATION VISIT
WWW.LOVETHEGARDEN.COM



THIS BAG IS MADE OF AT LEAST 30% RECYCLED MATERIALS
SAVING APPROXIMATELY 50 TONNES OF VIRGIN PLASTIC ANNUALLY



For more information call:
+44 (0) 1276 401390

Evergreen Garden Care UK,
1 Archipelago, Lyon Way,
Frimley, Surrey GU16 7ER.



MADE IN UK

50 LITRE

*when filled. Volume may reduce by up to 10%



TAKE CARE WHEN LIFTING

for more information visit
lovethegarden.com
or call **01276 401300**

TIPS

“Split the compost bag open, and **re-use** it as a weed barrier in your flower beds. ”