

Roundup® Speed Ultra is a fast acting weedkiller with no glyphosate* for use on unwanted vegetation. It can be used to kill broad leaved weeds and grasses in paths, drives, patios and around the bases of roses, ornamental shrubs and trees. Treated areas can be re-planted or re-seeded the day after treatment. MAPP No. 18692; PCS No. 06259

***THIS CLAIM IS PROVIDED TO HELP DISTINGUISH FROM OTHER FORMULAS THAT MAY CONTAIN GLYPHOSATE**

INSTRUCTIONS FOR USE

When to use

- READ ALL SAFETY INSTRUCTIONS BEFORE USE
- Use in March to October when the weeds are actively growing and have adequate leaf area to absorb the spray.
- Apply in calm conditions to avoid drift onto cultivated plants.
- Repeat treatment after a minimum of 14 days where re-growth occurs.
- For deep-rooted perennial weeds such as bindweed use a product containing glyphosate, for example Roundup® Total Weedkiller.
- Maximum number of treatments: 4 per year.

Where to use

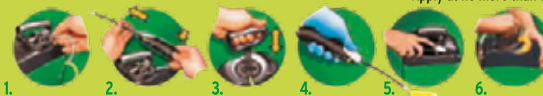
- Controls most weeds around the garden, e.g. gravel areas, paths, drives, hard surfaces, patios, tarmac, along fences and for edging lawns.
- Can be used to clean up weedy ground before planting vegetables, flowers, bushes and trees, and to renovate overgrown areas.

How to use

- SHAKE WELL BEFORE USE.
- Although not a requirement, as good practice, we recommend wearing waterproof gloves and gardening footwear.
- 1. Cut the white ties to release the hose and wand and connect the hose to the pack as shown. This is a quick couple system which is not reversible i.e. once in place cannot be removed without force.
- 2. EXTEND WAND - Lift sprayer off bottle, push yellow button while pulling lance into spray position.
- 3. PUMP - Pump handle 25-30 times for up to 10 minutes of spray. After pumping, push handle down, turn clockwise to lock into carry position.
- 4. SPRAY - Adjust spray pattern by turning the nozzle. Aim 50 cm from target weed and press white trigger. Spray to lightly wet the leaves avoiding run-off.
- 5. RETRACT WAND - After use, push the yellow button and retract the wand to its original position before clipping it onto the top of the pack for storage. This will prevent the accidental release of spray solution when in the storage position.
- 6. STORE - Push pump handle down, turn pump handle and cap anti-clockwise to relieve pressure, then retighten before storage.
- 7. REFILL - To refill remove the pump mechanism by unscrewing in an anti-clockwise direction.
 - This product treats 50 m².

Caution

- Roundup® Speed Ultra kills all green plant growth including lawn grasses.
- DO NOT apply to lawns and plants you want to keep.
- Apply at no more than 100 ml/m².



SAFETY INSTRUCTIONS

Protection during/in use

Avoid contact with eyes.

IN CASE OF CONTACT WITH EYES, RINSE IMMEDIATELY with plenty of water and seek medical advice.

If swallowed, seek medical advice immediately and show this container or label.

WASH OFF SPLASHES FROM SKIN IMMEDIATELY.

Wash hands and exposed skin after use.

Environmental Protection

Do not apply when rainfall is expected within 6 hours of application.

Risk to non-target insects or other arthropods.

Dangerous to bees. To protect bees and pollinating insects do not apply to plants when in flower.

Do not use where bees are actively foraging. Do not apply when flowering weeds are present.

Direct spray away from ponds and other surface water bodies.

Use appropriate containment to avoid environmental contamination.

Storage and Disposal

KEEP OUT OF THE REACH OF CHILDREN AND PETS.

KEEP PRODUCT IN ORIGINAL CONTAINER, tightly closed in a safe place.

Keep away from food, drink and animal feeding stuffs.

EMPTY CONTAINER COMPLETELY and dispose of safely.

DO NOT RE-USE CONTAINER FOR ANY OTHER PURPOSE.

PROTECT FROM FROST

Poisons Information: For information or to report a poisoning incident in Ireland, contact The National Poisons Information Centre (01 8092166), retain the label for reference.

Evergreen Garden Care UK Ltd
1 Archipelago, Lyon Way, Frimley,
Surrey GU16 7ER, England
Telephone: +44 (0) 1276 401 300

EU Importer

Evergreen Garden Care France SAS,
4 Allée des Séquoias,
69760 LIMONEST, FRANCE.

For more information visit: www.roundup-garden.com

Roundup® is a registered trademark and used under license.

5 Litre e



Allow the spray to dry before walking or playing on treated areas



RISK AND SAFETY INFORMATION

TO AVOID RISKS TO HUMAN HEALTH AND THE ENVIRONMENT, COMPLY WITH THE INSTRUCTIONS FOR USE.

- Read carefully and follow all instructions.
- Keep out of reach of children.
- Dispose of contents/container to a household waste recycling centre as hazardous waste except for empty containers which can be disposed of by recycling. Contact your local council for details.
- If medical advice is needed, have product container or label at hand.
- Do not eat, drink or smoke when using this product.
- Do not contaminate water with the product or its container. **DO NOT EMPTY INTO DRAINS**

MAPP No. 18692; PCS No. 06259

- Treat established perennial weeds before the start of flowering to give best results.
- Spray nettles and ground elder when new leaves have unfolded fully in late spring.
- Weeds may show first effects within an hour of spraying, depending on the weather and the type of weed.
- Treated areas can be re-planted or re-seeded the day after treatment.
- Repeat application if necessary, should new growth appear.

This product is TO BE USED ONLY AS A HOME GARDEN WEEDKILLER on unwanted vegetation and areas not intended to bear vegetation. It contains 60 g/l acetic acid in a ready to use solution.



Find out more online

LB17487 (89)