

# ROUNDUP®

**SPEED** Ultra Weedkiller

MAPP No. 18692  
PCS No. 06259

Roundup® Speed Ultra is a fast acting weedkiller with no glyphosate\* for use on unwanted vegetation. It can be used to kill broad leaved weeds and grasses in paths, drives, patios and around the bases of roses, ornamental shrubs and trees. Treated areas can be re-planted or re-seeded the day after treatment.

**\* THIS CLAIM IS PROVIDED TO HELP DISTINGUISH FROM OTHER FORMULAS THAT MAY CONTAIN GLYPHOSATE.**

## INSTRUCTIONS FOR USE

### When to use

- Use in March to October when the weeds are actively growing and have adequate leaf area to absorb the spray.
- If rain or drought conditions are expected within 6 hours of spraying this can reduce effectiveness and repeat treatment may be necessary.
- Apply in calm conditions to avoid drift onto cultivated plants.
- Repeat treatment after a minimum of 14 days where re-growth occurs.
- For deep-rooted perennial weeds such as bindweed use a product containing glyphosate, for example Roundup® Total Weedkiller.
- Maximum number of treatments: 4 per year.

### Where to use

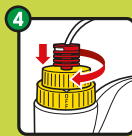
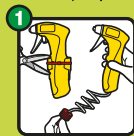
- Controls most weeds around the garden, e.g. gravel areas, paths, drives, hard surfaces, patios, tarmac, along fences and for edging lawns.
- Can be used to clean up weedy ground before planting vegetables, flowers, bushes and trees, and to renovate overgrown areas.
- Do not use on lawns or other plants you want to keep.

### How to use

- Although not required, we recommend wearing waterproof gloves and gardening footwear.
- 1. Cut the plastic tie connecting the sprayer to the bottle with scissors. Remove sprayer and pull out the red connector.
- 2. Insert red connector into the top of the cap and click in place. Press and twist the cap anti clockwise to "ON" position (1/3 of a turn)
- 3. Turn the sprayer nozzle to "NARROW" (1/4 turn left) and squeeze the trigger a few times to build pressure. Spray weeds evenly, ensuring coverage on all leaves.
- 4. After use, press and twist the top of the cap clockwise to the "OFF" position.
- 5. Squeeze the sprayer trigger to clear the nozzle. Turn the nozzle to "X" (OFF) and replace the sprayer in the holder without disconnecting the red connector.
- Apply at no more than 100 ml/m<sup>2</sup>.

### Restrictions

- Avoid contact by spray and spray drift with cultivated plants and desired vegetation.
- To avoid transfer to lawns and other desired vegetation do not walk into treated areas until the product has dried.
- Do not re-use empty bottle.



## SAFETY INSTRUCTIONS

### Protection during/in use.

Avoid contact with eyes. IN CASE OF CONTACT WITH EYES, RINSE IMMEDIATELY with plenty of water and seek medical advice. If swallowed, seek medical advice immediately and show this container or label. WASH OFF SPLASHES FROM SKIN IMMEDIATELY Wash hands and exposed skin after use.

### Environmental Protection

Do not apply when rainfall is expected within 6 hours of application. Risk to non-target insects or other arthropods. Dangerous to bees. To protect bees and pollinating insects do not apply to plants when in flower. Do not use where bees are actively foraging. Do not apply when flowering weeds are present Direct spray away from ponds and other surface water bodies. Use appropriate containment to avoid environmental contamination.

### Storage and Disposal

KEEP OUT OF THE REACH OF CHILDREN AND PETS. KEEP PRODUCT IN ORIGINAL CONTAINER, tightly closed in a safe place. Keep away from food, drink and animal feeding stuffs. EMPTY CONTAINER COMPLETELY and dispose of safely.

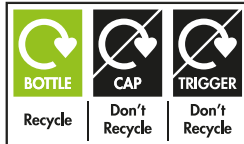
**Poisons Information:** For information or to report a poisoning incident in Ireland, contact the National Poisons Information Centre (01 8092166), retain the label for reference.

Evergreen Garden Care UK Ltd 1 Archipelago, Lyon Way, Frimley, Surrey GU16 7ER, England Telephone. +44 (0) 1276 401 300

EU Importer: Evergreen Garden Care France SAS,

4 Allée des Séquoias, 69760 LIMONEST.

For more information visit: [www.roundup-garden.com](http://www.roundup-garden.com)



## RISK AND SAFETY INFORMATION

To avoid risks to human health and the environment, comply with the instructions for use.

- Read carefully and follow all instructions. • Keep out of reach of children • Keep only in original container
- Dispose of contents/container to a household waste recycling centre as hazardous waste except for empty containers which can be disposed of by recycling. Contact your local council for details. • If medical advice is needed, have product container or label at hand. • Do not contaminate water with the product or its container.

### DO NOT EMPTY INTO DRAINS, SINKS OR OTHER WATER POINTS

MAPP No. 18692; PCS No. 06259

- Treat established perennial weeds before the start of flowering . • Spray nettles and ground elder when new leaves have unfolded fully in late spring. • Weeds may show first effects within an hour of spraying, depending on the weather and the type of weed. • Treated areas can be re-planted or re-seeded the day after treatment. • Repeat application as necessary, if new growth appears.

This product is a home garden weedkiller for use on unwanted vegetation and areas not intended to bear vegetation. It contains 60 g/l acetic acid in a ready to use solution.



Allow the spray to dry before walking or playing on treated areas

Roundup® is a registered trademark and used under licence.

STORE PRODUCT SAFELY  
PROTECT FROM Frost

LB16560 (89)

**3 Litre**e