

# Miracle-Gro®

PREMIUM

## All Purpose Compost for all plants

**ROOTED**  
IN SCIENCE



### SMART RELEASE SYSTEM CONTROLLED RELEASE PLANT FOOD

**Smart Release Feed** granules release nutrients only when conditions are warm and moist, providing **complete nutrition** for up to **6 months**.



### 14 VITAL MINERALS NPK+TRACE ELEMENTS

Contains a unique combination of **14 Vital Minerals**. **Nitrogen** is used by plants for lots of leaf growth and good green colour. **Phosphorous** is used by plants to help form new roots, make seeds, fruits, flowers and fight disease. **Potassium** helps plants make strong stems and keep growing fast and promote flowers and fruits. Additionally, there are 11 more minerals such as calcium, magnesium, sulphur, boron, chlorine, copper, iron, manganese, molybdenum, nickel and zinc which are vital for **maintaining plants health**.



### FIBRE SMART™ TECHNOLOGY PATENTED WOOD FIBRE

The patented **Fibre Smart™ Technology** hollow wood fibres ensure an **optimum balance** of **air & water** for **strong roots** to grow **healthy**. Wood fibres are **100% natural**.



### WATERLOCK TECHNOLOGY WETTING AGENT

\*<sup>2</sup>Miracle-Gro® Premium All Purpose Compost for all plants absorbs **25% more water** than ordinary compost.

APPROVED BY:  Elaine G, R&D Manager.

**HOW TO USE**

### CONTAINERS & BASKETS



Place a layer of compost in the base of the pot.



Tap out the plant from the old pot, loosen the root ball and place in the centre of the pot.

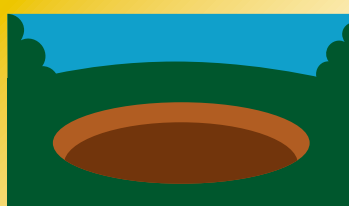


Fill the space around the root ball, ensuring the compost level covers all the roots.

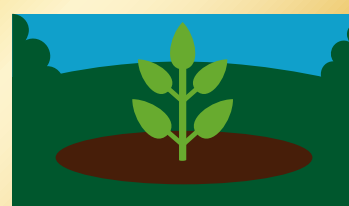


Firm lightly, water thoroughly and let drain.

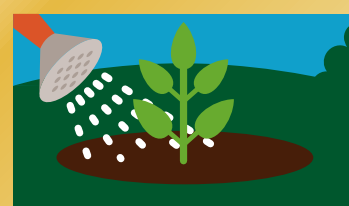
### BEDS & BORDERS



Dig a hole twice the size of the root ball.



Position the plant and fill with 50% soil and 50% compost and firm around the base.



Water thoroughly. We recommend using **Miracle-Gro Border Booster** to further enrich the soil.

**We strongly recommend using Miracle-Gro® Azalea, Camellia, Rhododendron, Ericaceous Compost for acid loving plants like Azaleas, Rhododendrons and Heather.**

SCIENTIFICALLY PROVEN AT  
**EVERGREEN RESEARCH STATION**  
RESEARCHED & TESTED BY EVERGREEN SCIENTISTS

OUR UNIQUE  
UK FACILITY

**SUSTAINABILITY**  
CARING FOR THE ENVIRONMENT

**REDUCE  
REUSE  
RECYCLE**



**THIS BAG IS RECYCLABLE**



MIRACLE-GRO PRODUCTION SITES OPERATE **0% TO LANDFILL**  
FOR MORE INFORMATION VISIT [WWW.LOVETHEGARDEN.COM](http://WWW.LOVETHEGARDEN.COM)



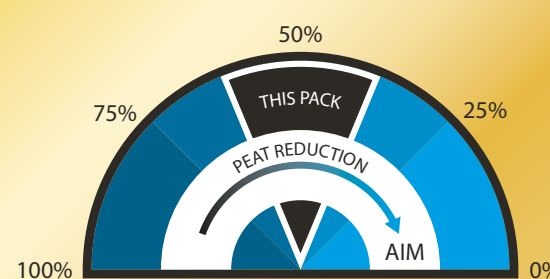
**THIS BAG IS MADE OF AT LEAST 30% RECYCLED MATERIAL**  
THIS WAY MIRACLE-GRO SAVES MORE THAN 50 TONNES OF VIRGIN PLASTIC ANNUALLY



WE ARE PROUDLY SUPPORTING **GREENFINGERS CHARITY™**  
CREATING MAGICAL GARDENS FOR CHILDREN IN HOSPICES

### RESPONSIBLE SOURCING & RE-USABILITY

We are actively working on improving the responsible sourcing profile of our compost mixes year on year. Miracle-Gro compost contains forest by-products, carefully processed to help you grow plants that improve your environment and make the world a more beautiful place.



### IDEAS ON RE-USING THIS BAG...

#### HANGING BASKET IDEA...

"You could add some drainage holes and use the bag as a liner for your hanging baskets."

#### GET GROWING...

"Make some drainage holes in the bottom of the bag, fill with compost and then plant potatoes in them."

#### FLOWER BED TIP...

"To use as a weed barrier split the bag open and lay down and make holes so that water can get through."

**USEFUL TIPS**

### USEFUL TIPS

- For continued fantastic results with the hungriest plants we recommend that you begin feeding with **Miracle-Gro Plant Food** as soon as the leaves begin to pale.
- Compost should be **kept moist** at all times and not allowed to dry out. Avoid plants sitting in water. Outdoor container plants require **frequent watering**.

### STORAGE INSTRUCTIONS

- Keep the bag closed when in storage to prevent drying out.
- Storage from one year to another may affect performance.
- Keep away from pesticides.
- Occasionally a white mould appears on the compost. This is **not harmful** to your plants and should disappear naturally.

### HEALTH & SAFETY ADVICE

- Use in a well ventilated place and avoid breathing in dust.
- Always wear gloves when gardening.
- Wash hands after use.
- Store in a cool place, away from sun.
- Open bag carefully and reseal after use.



ALWAYS USE GLOVES

### APPROXIMATE FILL OPTIONS



8 MEDIUM POTS  
22CM (9")



4 LARGE POTS  
25CM (10")



1 LARGE CONTAINER  
42CM (17")



6 HANGING BASKETS  
30CM (12")

for more information visit  
[lovethegarden.com](http://lovethegarden.com)  
or call 01276 401300



when filled. Volume may reduce by up to 10%\*<sup>3</sup>



TAKE CARE WHEN LIFTING



MADE IN THE UK

**EVERGREEN**  
Garden Care

For more information call +44 (0) 1276 401390, Evergreen Garden Care UK, 1 Archipelago, Lyon Way, Frimley, Surrey GU16 7ER.

Made under licence from OMS Investments, Inc.

Miracle-Gro® is the trademark of OMS Investments, Inc.

\*<sup>3</sup>See code of practice at [www.growingmedia.co.uk](http://www.growingmedia.co.uk).  
\*\*Registered Charity Number 1076640

### EVERGREEN RESEARCH STATION, UK

Evergreen Research Station is our officially recognised **Research and Development Centre** in Levington, Suffolk. This unique centre is responsible for driving **new product development**, through **process & formulation, physical analysis and field biology**. In addition, the team of scientists ensure we maintain our **renowned quality** through on-going **raw material assessment, formulation preparation and product trials**.

The results from trials undertaken at the **extensive 19 acre site** in Levington are used to develop new products and to support our unique portfolio across northern Europe. Fertilizers and growing media are both tested here under the protection of a **2,500m<sup>2</sup> glasshouse** and outside in beds and borders, containers and hanging baskets

Ordinary Garden Soil vs Miracle-Gro Premium All Purpose Compost for All Plants



GUARANTEED\*<sup>1</sup>  
GROWS PLANTS  
**TWICE AS BIG!**

\*Our scientific trials prove that Miracle-Gro Premium All Purpose Compost for All Plants grows plants twice as big as ordinary garden soil.