



PEAT FREE

PREMIUM
All Purpose
Compost

ROOTED
IN SCIENCE



SMART RELEASE SYSTEM CONTROLLED RELEASE PLANT FOOD

Smart Release Feed granules release nutrients only when conditions are warm and moist, providing **complete nutrition** for up to **3 months**.



14 VITAL MINERALS NPK+TRACE ELEMENTS

Contains a unique combination of **14 Vital Minerals**. **Nitrogen** is used by plants for lots of leaf growth and good green colour. **Phosphorous** is used by plants to help form new roots, make seeds, fruits, flowers and fight disease. **Potassium** helps plants make strong stems and keep growing fast and promote flowers and fruits. Additionally, there are 11 more minerals such as calcium, magnesium, sulphur, boron, chlorine, copper, iron, manganese, molybdenum, nickel and zinc which are vital for **maintaining plants health**.



FIBRE SMART™ TECHNOLOGY PATENTED WOOD FIBRE

The patented **Fibre Smart™ Technology** hollow wood fibres ensure an **optimum balance** of **air & water** for **strong roots** to grow **healthy**. Wood fibres are **100% natural**.



AQUACOIR® TECHNOLOGY

Coir is an **organic component** that provides near-ideal pH. It makes compost easier to handle, it absorbs and **retains water easily** for plants to flourish.

APPROVED BY: Elaine G, R&D Manager.

HOW
TO USE

CONTAINERS & BASKETS



Place a layer of compost in the **base of the pot**.



Tap out the plant from the old pot, loosen the root ball and **place in the centre of the pot**.

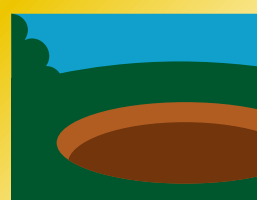


Fill the space around the root ball, ensuring the compost level covers all the roots.

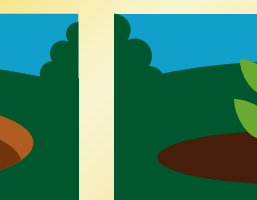


Firm lightly, **water thoroughly** and let drain.

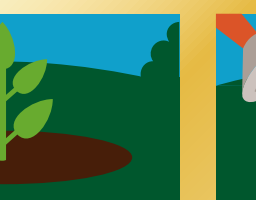
BEDS & BORDERS



Dig a hole **twice the size of the root ball**.



Position the plant and fill with **50% soil and 50% compost** and firm around the base.



Water thoroughly. We recommend using **Miracle-Gro Peat Free Border Booster** to further enrich the soil.

We strongly recommend using Miracle-Gro® Azalea, Camellia, Rhododendron, Peat Free Ericaceous Compost for acid loving plants like Azaleas, Rhododendrons and Heather.



SUSTAINABILITY
CARING FOR THE
ENVIRONMENT

WE ARE DEDICATED TO PROTECTING THE ENVIRONMENT
AND THIS COMPOST IS **100% PEAT FREE**

REDUCE
REUSE
RECYCLE



THIS BAG IS
RECYCLABLE



MIRACLE-GRO PRODUCTION SITES OPERATE
0% TO LANDFILL
FOR MORE INFORMATION VISIT
WWW.LOVETHEGARDEN.COM



THIS BAG IS MADE OF AT LEAST
60% RECYCLED MATERIAL
THIS WAY MIRACLE-GRO SAVES MORE THAN
100 TONNES OF VIRGIN PLASTIC ANNUALLY

RESPONSIBLE SOURCING AND RECYCLABILITY

We are actively working on improving the responsible sourcing profile of our compost mixes year on year. Miracle-Gro compost contains forest by-products, carefully processed to help you grow plants that improve your environment and make the world a more beautiful place.



WITH OUR PARTNERS WE HAVE
RESTORED MORE THAN
3,000 HECTARES
OF PEATLAND IN THE PAST 20 YEARS



WE ARE PROUDLY SUPPORTING
GREENFINGERS CHARITY³
CREATING MAGICAL GARDENS
FOR CHILDREN IN HOSPICES

IDEAS ON RE-USING THIS BAG...

HANGING BASKET IDEA...

"You could add some drainage holes and use the bag as a liner for your hanging baskets."

GET GROWING...

"Make some drainage holes in the bottom of the bag, fill with compost and then plant potatoes in them."



USEFUL
TIPS

USEFUL TIPS

- For continued fantastic results with the hungriest plants we recommend that you begin feeding with **Miracle-Gro Plant Food** as soon as the leaves begin to pale.
- Compost should be **kept moist** at all times and not allowed to dry out. Avoid plants sitting in water. Outdoor container plants require **frequent watering**.

STORAGE INSTRUCTIONS

- Keep the bag closed when in storage to prevent drying out.
- Storage from one year to another may affect performance.
- Keep away from pesticides.
- Occasionally a white mould appears on the compost. This is **not harmful** to your plants and should disappear naturally.

HEALTH & SAFETY ADVICE

- Use in a well ventilated place and avoid breathing in dust.
- Always wear gloves when gardening.
- Wash hands after use.
- Store in a cool place, away from sun.
- Open bag carefully and reseal after use.



ALWAYS USE
GLOVES

APPROXIMATE FILL OPTIONS



8
MEDIUM POTS
22CM (9")



4
LARGE POTS
25CM (10")



1
LARGE CONTAINER
42CM (17")



6
HANGING BASKETS
30CM (12")

for more information visit
lovethegarden.com
or call **01276 401300**



TAKE CARE
WHEN LIFTING



MADE IN
THE UK



BG7864 (18)

For more information call +44 (0) 1276 401390, Evergreen Garden Care UK, 1 Archipelago, Lyon Way, Frimley, Surrey GU16 7ER.

Made under licence from OMS Investments, Inc.

*See code of practice at www.growingmedia.co.uk.
**Registered Charity Number 1076640

Miracle-Gro® is the trademark of OMS Investments, Inc.

EVERGREEN RESEARCH STATION, UK

Evergreen Research Station is our officially recognised **Research and Development Centre** in Levington, Suffolk. This unique centre is responsible for driving **new product development**, through **process & formulation**, **physical analysis** and **field biology**. In addition, the team of scientists ensure we maintain our **renowned quality** through on-going **raw material assessment**, **formulation preparation** and **product trials**.

The results from trials undertaken at the **extensive 19 acre site** in Levington are used to develop new products and to support our unique product portfolio across northern Europe. Fertilizers and growing media are both tested here under the protection of a **2,500m² glasshouse** and outside in beds and borders, containers and hanging baskets

Ordinary Garden Soil
Miracle-Gro Premium All Purpose Compost for All Plants



GUARANTEED*
**GROWS PLANTS
TWICE AS BIG!**

*Our scientific trials prove that Miracle-Gro Premium All Purpose Compost for All Plants grows plants twice as big as ordinary garden soil.



SCIENTIFICALLY PROVEN AT
**EVERGREEN
RESEARCH STATION**
RESEARCHED & TESTED BY EVERGREEN SCIENTISTS

OUR UNIQUE
UK FACILITY