



PREMIUM Rose, Tree & Shrub Special Plants Compost

ROOTED IN SCIENCE



ERICACEOUS FORMULA GLOSSY GREEN LEAVES

Miracle-Gro Premium Rose, Tree & Shrub Special Plants Compost contains a special formula balanced with extra iron & pH that delivers glossy green leaves.



FIBRE SMART™ TECHNOLOGY PATENTED WOOD FIBRE

The compost contains a unique, patented Fibre Smart™ technology. The hollow wood fibres ensure an optimum balance of air & water for strong roots to grow healthy. Wood fibres are 100% natural.



14 VITAL MINERALS NPK+TRACE ELEMENTS

Contains a unique combination of 14 Vital Minerals. **Nitrogen** is used by plants for lots of leaf growth and good green colour. **Phosphorous** is used by plants to help form new roots, make seeds, fruits, flowers and fight disease. **Potassium** helps plants make strong stems and keep growing fast and promote flowers and fruits. Additionally, there are 11 more minerals such as calcium, magnesium, sulphur, boron, chlorine, copper, iron, manganese, molybdenum, nickel and zinc which are vital for maintaining plants health.



WATERLOCK TECHNOLOGY WETTING AGENT

*2Miracle-Gro® Premium Rose, Tree & Shrub Special Plants Compost absorbs 25% more water than ordinary compost.

APPROVED BY: Elaine G, R&D Manager.

USEFUL TIPS

USEFUL TIPS

- Plants need feeding throughout the season to ensure they remain healthy, beautiful and produce better blooms.
- Three months after planting with Miracle-Gro Premium Rose, Tree & Shrub Special Plants Compost start using Miracle-Gro Rose, Tree & Shrub Plant Food for continued fantastic results.
- Compost in containers should be kept moist at all times and not be allowed to dry out.
- In areas where tap water is 'hard' and forms lime-scale in your kettle, try to water with rainwater whenever possible. This will help to maintain an acid balance in the compost in the long term.

STORAGE INSTRUCTIONS

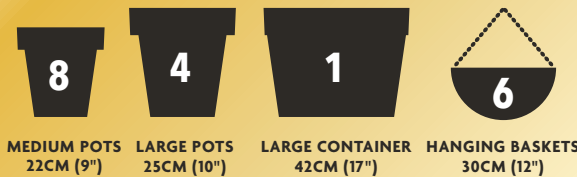
- Keep the bag closed when in storage to prevent drying out.
- Storage from one year to another may affect performance.
- Keep away from pesticides.
- Occasionally a white mould appears on the compost. This is **not harmful** to your plants and should disappear naturally.

HEALTH & SAFETY ADVICE

- Use in a well ventilated place and avoid breathing in dust.
- Wash hands after use.
- Always wear gloves when gardening.



APPROXIMATE FILL OPTIONS



MEDIUM POTS 22CM (9") LARGE POTS 25CM (10") LARGE CONTAINER 42CM (17") HANGING BASKETS 30CM (12")

SUSTAINABILITY CARING FOR THE ENVIRONMENT

REDUCE REUSE RECYCLE



THIS BAG IS RECYCLABLE



MIRACLE-GRO PRODUCTION SITES OPERATE **0% TO LANDFILL** FOR MORE INFORMATION VISIT WWW.LOVETHEGARDEN.COM



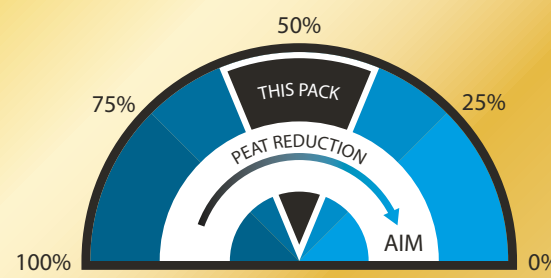
THIS BAG IS MADE OF AT LEAST **30% RECYCLED MATERIAL** THIS WAY MIRACLE-GRO SAVES MORE THAN 50 TONNES OF VIRGIN PLASTIC ANNUALLY



WE ARE PROUDLY SUPPORTING **GREENFINGERS CHARITY™** CREATING MAGICAL GARDENS FOR CHILDREN IN HOSPICES

RESPONSIBLE SOURCING & RE-USABILITY

We are actively working on improving the responsible sourcing profile of our compost mixes year on year. Miracle-Gro compost contains forest by-products, carefully processed to help you grow plants that improve your environment and make the world a more beautiful place.



IDEAS ON RE-USING THIS BAG...

HANGING BASKET IDEA...

"You could add some drainage holes and use the bag as a liner for your hanging baskets."

GET GROWING...

"Make some drainage holes in the bottom of the bag, fill with compost and then plant potatoes in them."

FLOWER BED TIP...

"To use as a weed barrier split the bag open and lay down and make holes so that water can get through."

HOW TO USE

POTS & PATIO PLANTERS

It's time to repot when: The plant is overgrown and "root bound" (densely wrapped roots). Roots are growing out of the drainage holes. The plant's lower leaves turn yellow or drop off. The compost is faded or crusty.

How to repot: Wash the containers and water the plant.



Place a layer of compost in the **base of the pot**.



Tap out the plant from the old pot, loosen the root ball and **place in the centre of the pot**.

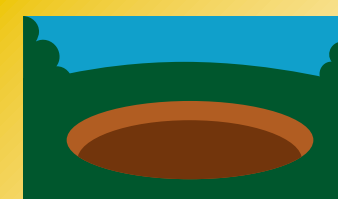


Fill the space around the root ball, ensuring the compost level covers all the roots.

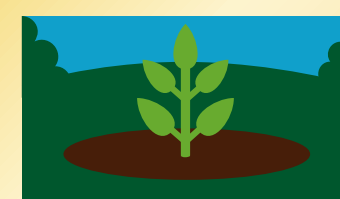


Firm lightly, **water thoroughly** and let drain.

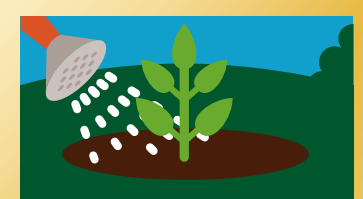
PLANTING IN BEDS & BORDERS



Dig a hole **twice the size of the root ball**.



Position the plant and **fill with 50% soil and 50% compost** and firm around the base.



Water thoroughly. We recommend using **Miracle-Gro Border Booster** to further enrich the soil.

We strongly recommend using Miracle-Gro® Azalea, Camellia, Rhododendron, Ericaceous Compost for acid loving plants like Azaleas, Rhododendrons and Heather.

for more information visit lovethegarden.com or call 01276 401300



when filled. Volume may reduce by up to 10%*³



For more information call +44 (0) 1276 401390, Evergreen Garden Care UK, 1 Archipelago, Lyon Way, Frimley, Surrey GU16 7ER.

Made under licence from OMS Investments, Inc. Miracle-Gro® is the trademark of OMS Investments, Inc.

*See code of practice at www.growingmedia.co.uk. **Registered Charity Number 1076640

EVERGREEN RESEARCH STATION, UK

Evergreen Research Station is our officially recognised Research and Development Centre in Levington, Suffolk. This unique centre is responsible for driving new product development, through process & formulation, physical analysis and field biology. In addition, the team of scientists ensure we maintain our renowned quality through on-going raw material assessment, formulation preparation and product trials.

The results from trials undertaken at the extensive 19 acre site in Levington are used to develop new products and to support our unique portfolio across northern Europe. Fertilizers and growing media are both tested here under the protection of a 2,500m² glasshouse and outside in beds and borders, containers and hanging baskets

Ordinary Garden Soil vs Miracle-Gro Premium All Purpose Compost for All Plants



GUARANTEED*¹ GROWS PLANTS TWICE AS BIG!

*Our scientific trials prove that Miracle-Gro Premium All Purpose Compost for All Plants grows plants twice as big as ordinary garden soil.

SCIENTIFICALLY PROVEN AT
EVERGREEN
RESEARCH STATION

OUR UNIQUE
UK FACILITY

RESEARCHED & TESTED BY EVERGREEN SCIENTISTS