

WHERE TO USE?

Use for all types of seeds

Our John Innes Seed compost is ideal for all young plants. It has been specially developed, with a high phosphate formula and 14 vital minerals for optimum root growth. With its traditional mix of loam and sand, it is a great start for your plants.



We strongly recommend using Levington Ericaceous compost for acid loving plants like Azaleas, Rhododendrons or Heathers.

Seed Sowing

Fill a clean seed tray with John Innes Seed compost, level off with your hand or a ruler. Firm lightly and water using a fine rose.

Sow the seeds thinly and evenly. Cover the seeds when necessary with their own depth of compost, firming lightly. For smaller seeds such as Petunia or Lobelia there is no need to cover with compost.



To retain water, cover the seed tray or container with either glass or polythene. Make sure the tray is kept out of direct sunlight.

Follow the recommendations on the seed packet for temperatures, covering the seed and for shading. When the seedlings are ready to be transplanted into individual pots, take care to handle them by the leaves and not the stems or rods.

Root Cuttings

Take the cutting in the appropriate way according to the plant. Fill the container with John Innes Seed compost. Place the cutting in a hole in the compost. Firm lightly, water the compost, cover to retain moisture and keep warm.

Do not cover hairy leaved plants like geraniums and saintpaulia. Keep in a warm, well-lit place, out of direct sunlight. Water again only when the compost dries out.

Growing on

After 6 weeks water with Miracle-Gro Water soluble plant food. Pot on into individual pots as soon as roots become well developed or leaves start to touch. Re-pot into Levington's John Innes No1. compost. Prick out developed seedlings and transplant root cuttings into Levington's John Innes No.1 compost to grow on.

LEVINGTON JOHN INNES COMPOST RANGE

Stages of growth



JOHN INNES Seed

Perfect for all seedlings.



JOHN INNES NO.1

Perfect for all young plants and root cuttings.



JOHN INNES NO.2

Perfect for re-potting.



JOHN INNES NO.3

Perfect for final re-potting of mature plants.



JOHN INNES Ericaceous

Perfect for acid loving plants like Azaleas, Heathers & Rhododendrons.

HOW TO USE?

Instructions for use

Use straight from the bag, it's as easy as that. When filling or potting, firm lightly. Keep the compost moist and do not let it dry out. Do not leave plants standing in water. Storing from one year to another may result in the fertiliser ratios becoming unbalanced.

Storage instructions

- Keep the bag closed when in storage to prevent drying out.
- Storage from one year to another may affect performance.
- Keep away from pesticides.
- Occasionally a white mould appears on the compost. This is not harmful to your plants and should disappear naturally.

Health and safety advice



- Use in a well ventilated place and avoid breathing in dust.
- Always wear gloves when gardening
- Wash hands after use.
- Store in a cool place, away from sun.
- Open bag carefully and reseal after use.

APPROXIMATE VOLUME

How much is in the bag?



*See code of practice at www.growingmedia.co.uk.

EVERGREEN
Garden Care

For more information call:
+44 (0) 1276 401390
Evergreen Garden Care UK,
1 Archipelago, Lyon Way,
Frimley, Surrey GU16 7ER.



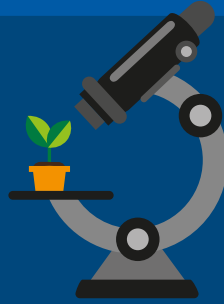
30
LITRE
when filled.
Volume may
reduce by up
to 10%*



for more information visit
lovethegarden.com
or call **01276 401300**

OUR STORY...

Established in 1967, Levington has been providing expertise, research and innovation into compost for over 50 years. When it comes to compost, Levington has been the gardener's choice for decades.



At our officially recognised research station in Levington, Suffolk, we are constantly innovating and testing for the best combinations of ingredients in compost to ensure your plants are strong and healthy.

WHAT IS IT?

What is John Innes?

John Innes composts were developed in the 1930's. They are based on a traditional mixture of loam, sand and peat. With a balance of nutrients this formula will ensure strong, healthy plants.

John Innes Seed Compost



Levington John Innes Seed compost is a special, **traditional mix** with loam and sand that secures an open texture for the **roots to develop** and excess **moisture to drain** freely.

Optimum **drainage** system prevents excess moisture.



NITROGEN (N)	For greener leaves and healthy shoots
PHOSPHATE (P)	For strong root development
POTASSIUM (K)	For fruit and flowers
TRACE ELEMENTS	Essential for all round plant health and disease resistance



Levington John Innes Seed compost is specially formulated with phosphate for optimum root growth to ensure your young plants get a great, healthy start.

SUSTAINABILITY

Responsible sourcing



We are actively working on improving the responsible sourcing profile of our compost mixes year on year. Levington compost contains forest by-products, carefully processed to help you grow plants that improve your environment and make the world a more beautiful place.

How much Peat?



We are actively involved in the management and restoration of the peatlands we harvest from.

REDUCE ► RE-USE ► RECYCLE



THIS BAG IS RECYCLABLE



LEVINGTON PRODUCTION SITES OPERATE
0% TO LANDFILL
FOR MORE INFORMATION VISIT
WWW.LOVETHEGARDEN.COM



THIS BAG IS MADE OF AT LEAST 30% RECYCLED MATERIALS
SAVING APPROXIMATELY 50 TONNES OF VIRGIN PLASTIC ANNUALLY

TIPS

*" Split the compost bag open, and **re-use** it as a weed barrier in your flower beds."*