

The product Roundup® NL Weed Control Ready to Use is broken down naturally in the soil. It can be used to kill a broad range of annual garden weeds including: clover, chickweed, common groundsel, black nightshade, sowthistle, black medick, annual meadow-grass and mayweeds. Suitable for use on flower beds, vegetable patches as well as gravel paths and patios.

**\*THIS CLAIM IS PROVIDED TO HELP DISTINGUISH FROM OTHER FORMULAS THAT MAY CONTAIN GLYPHOSATE.**

## INSTRUCTIONS FOR USE

• FOR USE ONLY AS A HOME GARDEN WEEDKILLER. • READ ALL SAFETY INSTRUCTIONS BEFORE USE.

### When to use

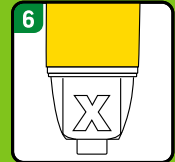
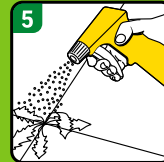
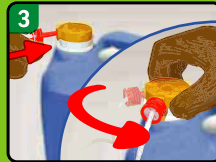
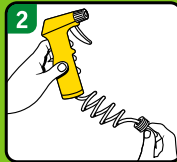
- Use in April to November when the weeds are actively growing.
- For best results apply in warm, dry conditions when weeds are young and actively growing, usually during spring or early summer. Do not apply when there is a RISK OF FROST OR DROUGHT as weeds will not be actively growing.
- After 3 hours, product will not be washed away by rain. Reduces the need for repeat treatment.
- Repeat treatment if necessary after a minimum of 7 days for larger weeds or where re-growth occurs.
- For deep rooted annual weeds such as black bindweed use Roundup® glyphosate based product.
- It is most effective on young weeds smaller than 10 cm.
- Maximum number of treatments: 4 per year.

### Where to use

- For the control of weeds around ornamental garden plants, trees and in areas not intended to bear vegetation.
- Controls most weeds around the garden. Suitable to use on gravel paths and drives and along fences.
- Can be used to clean up weedy ground before planting vegetables, flowers, bushes and trees, and to renovate overgrown areas.
- Should be applied on a calm, dry day when there is no risk of spray drift onto adjacent desirable plants.
- Do not direct spray or allow spray drift onto cultivated plants and lawn as Roundup® NL Weed Control Ready to Use destroys all green plant parts.

### How to use

- SHAKE WELL BEFORE USE.
  - Although not a requirement, as good practice, we recommend wearing waterproof gloves and gardening footwear.
1. Cut the plastic tie with scissors
  2. Cut with chisel the plastic tie
  3. Pull out the red connector from the trigger
  4. Insert red plug into spout on cap until it clicks. Squeeze cap as indicated and turn to open
  5. Turn the spray nozzle to «ON» and prime by squeezing the trigger a few times. Hold the sprayer approximately 50cm away from the target weed and spray to lightly wet the weeds - avoid run off.
  6. After use, turn the spray nozzle to OFF position without disconnecting the hose. Turn cap to closed position.
- When spraying large areas it is easier to mark out and measure the area before application.
  - 3L to treat 100 m<sup>2</sup>. • Apply at 30ml/m<sup>2</sup>.



## SAFETY INSTRUCTIONS

**Protection during/in use:**  
KEEP OFF SKIN/AWAY FROM EYES. WASH OFF SPLASHES IMMEDIATELY. WASH HANDS AND EXPOSED SKIN AFTER USE.

**Environmental protection:**  
To protect aquatic organisms and non-target plants do not apply on impermeable hard surfaces such as asphalt, concrete, cobblestones, tarmac, paving, patio and other situations with a high risk of run-off. Direct spray away from ponds and other surface water bodies.

**Storage and disposal:**  
KEEP PRODUCT IN ORIGINAL CONTAINER, tightly closed, in a safe place. KEEP AWAY FROM FOOD, DRINK AND ANIMAL FEEDING STUFFS. KEEP PRODUCT AWAY FROM CHILDREN AND PETS.  
Do not re-use the container for any other purpose.

**Poisons Information:** For information or to report a poisoning incident in Ireland, contact The National Poisons Information Centre (01 8092166), retain the labels for reference.

- Treat annual weeds before the start of flowering to give best results.
  - Weeds may show first effects within 2-3 hours of spraying, depending on the weather and the type of weed.
- This product is a home garden weedkiller for use as a herbicide for the control of a range of annual weeds. Contains 43.1g/L Pelargonic acid as an Emulsion, oil in water (EW).

Evergreen Garden Care UK Ltd  
1 Archipelago, Lyon Way, Frimley,  
Surrey GU16 7ER, England  
Telephone. +44 (0) 1276 401 300

For more information visit:  
[www.roundup-garden.com](http://www.roundup-garden.com)

EU Importer  
Evergreen Garden Care France SAS,  
4 Allée des Séquoias, 69760 LIMONEST,  
FRANCE.

Roundup® is a registered  
trademark and used  
under license.

STORE PRODUCT SAFELY  
PROTECT FROM FROST

**3 Litre e**

## RISK AND SAFETY INFORMATION

**TO AVOID RISKS TO HUMAN HEALTH AND THE ENVIRONMENT, COMPLY WITH THE INSTRUCTIONS FOR USE.**

- Read carefully and follow all instructions. • Keep out of reach of children.
- Dispose of contents/container to a household waste recycling centre as hazardous waste except for empty containers which can be disposed of by recycling. Contact your local council for details.
- If medical advice is needed, have product container or label at hand.
- Do not eat, drink or smoke when using this product.
- Do not contaminate water with the product or its container.
- Contains CMIT/MIT. May produce an allergic reaction.

**DO NOT EMPTY INTO DRAINS.**

MAPP No. 19240 PCS No. 06393



Find out more online



**Keep children and pets  
away from treated areas  
until spray has dried**

