

# FAST ACTION ROUNDUP®

## Ready-to-Use Weedkiller

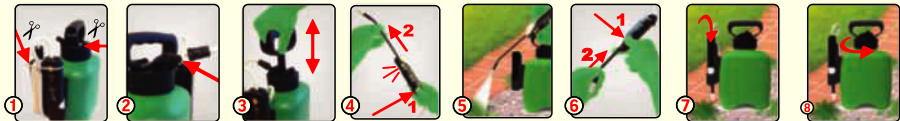
Multi-purpose weedkiller, kills annual and deep rooted perennial weeds, including grasses, dandelions, docks, nettles, ground elder, bindweed and thistles. It is inactivated on contact with the soil and is then broken down by soil micro-organisms, to allow replanting.

KEEP CHILDREN AND PETS OUT OF TREATED AREAS UNTIL DRY.

## Pump 'N Go Sprayer System

### Instructions for Use

#### How to use



Although not a requirement, as good practice, we recommend wearing waterproof gloves and gardening footwear.

**1. CUT** - Cut the white ties to release the hose and wand. **2. CONNECT** - Connect the hose to the pack as shown. This is a quick couple system which is not reversible i.e. once in place cannot be removed without force. **3. PUMP** - Pump handle up to 10 times for 3 minutes of spray. After pumping, push handle down, turn clockwise to lock into carry position. **4. EXTEND WAND** - Lift sprayer off bottle, push yellow button while pulling lance until it snaps into spray position. **5. SPRAY** - Adjust spray pattern by turning the nozzle. Aim 50 cm from target weed and press white trigger. Sprayer to lightly wet the leaves avoiding run-off. **6. RETRACT WAND** - After use, push the yellow button and retract the wand to its original position before clipping it onto the side of the pack for storage. This will prevent the accidental release of spray solution when in the storage position. **7. STORE** - Push pump handle down, turn pump handle and cap anti-clockwise to relieve pressure, then retighten before storage. **8. Refill** - to refill remove the pump mechanism by unscrewing in an anti clockwise direction.

#### When to use

- Spray at any time when the weeds are actively growing and have adequate leaf area to absorb the spray.
- Rain within 6 hours of spraying reduces effectiveness and repeat treatment may be necessary.
- Apply in calm conditions to avoid drift onto cultivated plants.

#### Where to use

- Controls most weeds around the garden, e.g. gravel areas, paths, drives, hard surfaces,
- patios, tarmac, along fences and for edging lawns. It can be used to clean up weedy ground before planting vegetables, flowers, bushes and trees, and to renovate overgrown areas.
- Do not use on lawns or other wanted plants unless you want to kill them.

#### Restrictions

- Avoid contact by spray and spray drift with cultivated plants and desired vegetation
- To avoid transfer to lawns and other desired vegetation do not walk into treated areas until the product has dried

#### Poisons Information:

For information or to report a poisoning incident in Ireland, contact The National Poisons Information Centre (01 8092166), retain the labels for reference.zv

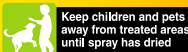
- Treat established perennial weeds at the start of flowering to give best results.
- Spray nettles and ground elder when new leaves have unfolded fully in late spring.
- Weeds may show first effects from a few days up to 4 weeks, depending on the weather and the type of weed.
- Leave weeds 7 days before digging or soil cultivation, for the weedkiller to move to the roots.
- Repeat application if necessary, should new growth appear.

#### RISK AND SAFETY INFORMATION

To avoid risks to human health and the environment, comply with the instructions for use. Read carefully and follow all instructions. Keep out of reach of children. Keep in original container. If medical advice is needed, have product container or label at hand. Dispose of contents/ container to a household waste recycling centre as hazardous waste except for empty containers which can be disposed of by recycling. Contact your local council for details. Do not contaminate water with the product or its container.

#### STORAGE AND DISPOSAL

Empty container completely and dispose of safely • Dispose of unused product in its container at a household waste site (civic amenity site) Contact local council (local authority) for details • **DO NOT EMPTY INTO DRAINS, SINKS OR OTHER WATER POINTS**



This product is a home garden weedkiller for use on unwanted vegetation and areas not intended for bear vegetation. It contains 7.2g/l glyphosate acid (present as 9.7g/l) IPA salt of glyphosate in a ready to use solution MAPP 18679 - PCS N° 01669



Roundup® is a registered trademark and used under license

Evergreen Garden Care UK Ltd  
1 Archipelago, Lyon Way,  
Frimley, Surrey GU16 7ER, England  
Telephone: +44 (0) 1276 401 300  
EU Importer  
Evergreen Garden Care  
France SAS, 4 Allée des Séquoias,  
69760 LIMONEST, FRANCE.

2.5 Litre e  
PROTECT FROM FROST

LB16061 (89)