

ROUNDUP® Tough Ready-To-Use Weedkiller

MAPP No. 18693 PCS No. 03726

is inactivated on contact with the soil and is then broken down by soil micro-organisms, to allow replanting.

It is a multi-purpose weedkiller that kills annual and deep rooted weeds, including:

✔ **NETTLES** ✔ **GROUND ELDER** ✔ **THISTLES** ✔ **BINDWEED** ✔ **BRACKEN** ✔ **BRAMBLES** ✔ **OTHER WOODY WEEDS**

INSTRUCTIONS FOR USE

FOR USE ONLY AS A HOME GARDEN WEEDKILLER. READ ALL SAFETY INSTRUCTIONS BEFORE USE.

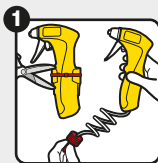
WHEN TO USE

- For best results apply in warm, dry conditions (APR-NOV).
- Spray at any time when the weeds are actively growing and have adequate leaf area to absorb the spray.
- Rain within 6 hours of spraying reduces effectiveness and repeat treatment may be necessary.
- Apply in calm conditions to avoid drift onto cultivated plants.
- Leave weeds 7 days before digging or replanting, for the weedkiller to move to the roots.
- **Maximum number of treatments: 1 per year.**

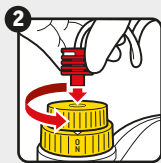


HOW TO USE

As good practice, we recommend wearing waterproof gloves and gardening footwear.



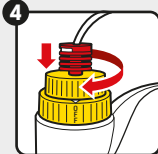
1 Cut the plastic tie connecting the sprayer to the bottle with scissors. Remove sprayer and pull out the red connector.



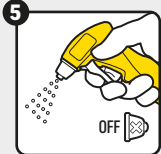
2 Insert red connector into the top of the cap and click in place. Press and twist the cap anti clockwise to 'ON' position (1/2 of a turn).



3 Turn the sprayer nozzle to 'NARROW' or 'WIDE' and squeeze the trigger a few times to build pressure. Spray weeds evenly, ensuring coverage on all the leaves.



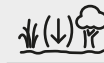
4 After use, press and twist the top of the cap clockwise to the 'OFF' position.



5 Squeeze the sprayer trigger to empty nozzle. Turn nozzle to 'X' (OFF) and replace sprayer in the holder without disconnecting the red connector.

- Treat established perennial weeds at the start of flowering to give best results.
- Spray nettles/ground elder when new leaves have unfolded fully in late spring.
- Weeds may show first effects from a few days up to 4 weeks, depending on the weather and type of weed.
- Repeat application if necessary, should new growth appear.

WHERE TO USE



- Controls most perennial, tough, deep rooted and woody weeds around the garden.
- Ideal for controlling unwanted vegetation and clearing areas for planting.
- Do not use on lawns or other wanted plants unless you want to kill them.

Guidance for best results

- Nettles: June to September.
- Thistles: June to July or at flowering.
- Bindweed: June to August or at flowering.
- Bracken, brambles and other woody weeds: June to September.

RESTRICTIONS

- Avoid contact by spray and spray drift with cultivated plants and desired vegetation.
- To avoid transfer to lawns and other desired vegetation, do not walk into treated areas until the product has dried.

SAFETY INSTRUCTIONS

Protection during/in use: KEEP OFF SKIN. DO NOT BREATHE SPRAY. WASH OFF SPLASHES IMMEDIATELY. WASH HANDS AND EXPOSED SKIN AFTER USE.

Environmental protection: Do not contaminate water with the product or its container. Do not empty into drains. Direct spray away from ponds and other surface water bodies. Use appropriate containment to avoid environmental contamination.

Storage and disposal: KEEP PRODUCT IN ORIGINAL CONTAINER, tightly closed in a safe place. KEEP AWAY FROM FOOD, DRINK AND ANIMAL FEEDING STUFFS. EMPTY CONTAINER COMPLETELY and dispose of safely. Do not re-use empty containers.

Poisons information: For information or to report a poisoning incident in Ireland, contact The National Poisons Information Centre (01 8092166), retain the label for reference.

RISK & SAFETY INFORMATION

TO AVOID RISKS TO HUMAN HEALTH AND THE ENVIRONMENT, COMPLY WITH THE INSTRUCTIONS FOR USE.

- Read carefully and follow all instructions.
- Keep out of reach of children.
- Do not eat, drink or smoke when using this product.
- If medical advice is needed, have product container or label at hand.
- Empty container completely and dispose of by recycling.
- Dispose of contents/container to a household waste recycling center as hazardous waste except for empty containers which can be disposed of by recycling. Contact your local council for details.

MAPP No. 18693 PCS No. 03726

Evergreen Garden Care UK Ltd,
1 Archipelago, Lyon Way, Frimley, Surrey, GU16 7ER, England
Telephone: +44 (0)1276 401 300

For more information visit: www.roundup-garden.com

EU Importer

Evergreen Garden Care France SAS,
4 Allée des Séquoias, 69760 LIMONEST, FRANCE,
Tel: +353 818 882 479

Contains 7.2 g/L (0.72% w/w) of glyphosate as a ready to use solution formulation.

ROUNDUP® is a registered trademark and used under licence.

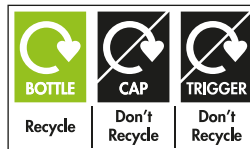


FIND OUT
MORE ONLINE



Keep children and pets
away from treated areas
until spray has dried

PROTECT FROM FROST



3 Litre e

