



# PERFORMANCE ORGANICS™

## PEAT FREE

### All Purpose 100% Organic Compost

*Performance Organics™ from Miracle-Gro® is the breakthrough range of 100% natural gardening products that still grows **twice as big**, but **organically**.*

*Never again having to compromise on efficacy, you will now be proud of not only **what** you grow but also **how** you grow it.*



## WHY USE?

Miracle-Gro® Performance Organics™ Peat Free All Purpose Compost is a high performance 100% natural and organic compost which is **glorious on plants, gentle on nature**.



Miracle-Gro® results in an organic form.



Slow releasing organic nutrients over 3 months.



Plant based by-products from the food industry and enriched with guano.



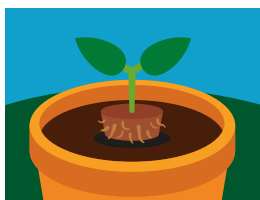
Contains 100% natural hollow wood fibres, ensuring an optimum balance of air and water for strong roots.

## HOW TO USE?

### CONTAINERS & BASKETS



Place a layer of compost in the **base of the pot**.



Tap out the plant from the old pot, loosen the root ball and **place in the centre of the pot**.

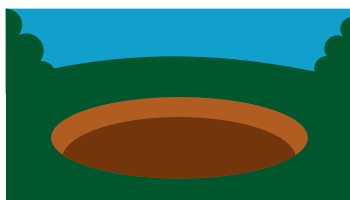


**Fill the space around the root ball**, ensuring the compost level covers all the roots.



Firm lightly, **water thoroughly** and let drain.

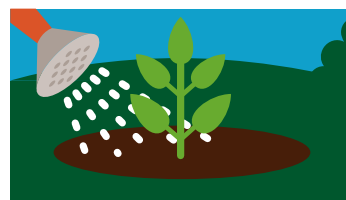
### BEDS & BORDERS



Dig a hole **twice the size of the root ball**.



Position the plant and **fill with 50% soil and 50% compost** and firm around the base.



**Water thoroughly**. We recommend using Performance Organics™ Plant Food to feed your plant.

We strongly recommend using Miracle-Gro® Peat Free Premium Azalea, Camellia, Rhododendron, Ericaceous Plants Compost for acid loving plants like Azaleas, Rhododendrons and Heather.

## SUSTAINABILITY

WE ARE DEDICATED TO PROTECTING THE ENVIRONMENT  
AND THIS COMPOST IS **100% PEAT FREE**

# REDUCE REUSE RECYCLE



THIS BAG IS **RECYCLABLE**



MIRACLE-GRO PRODUCTION SITES OPERATE **0% TO LANDFILL**  
FOR MORE INFORMATION VISIT [WWW.LOVETHEGARDEN.COM](http://WWW.LOVETHEGARDEN.COM)



THIS BAG IS MADE OF **RECYCLED MATERIAL**  
THIS WAY MIRACLE-GRO® SAVES TONNES OF VIRGIN PLASTIC GLOBALLY



WITH OUR PARTNERS WE HAVE RESTORED MORE THAN **3,000 HECTARES** OF PEATLAND IN THE PAST 20 YEARS  
WE ARE PROUDLY SUPPORTING **GREENFINGERS CHARITY™** CREATING MAGICAL GARDENS FOR CHILDREN IN HOSPICES

### IDEAS ON RE-USING THIS BAG...

#### HANGING BASKET IDEA...

"You could add some drainage holes and use the bag as a liner for your hanging baskets."

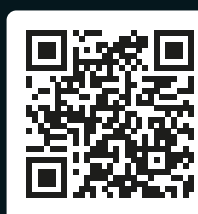
#### GET GROWING...

"Make some drainage holes in the bottom of the bag, fill with compost and then plant potatoes in them."

### RESPONSIBLE SOURCING

We are actively working on improving the responsible sourcing profile of our compost mixes year on year. Miracle-Gro compost contains forest by-products, carefully processed to help you grow plants that improve your environment and make the world a more beautiful place.

### RESPONSIBILITY INDEX



For further information, scan the QR code or visit: [responsiblesourcing.hta.org.uk](http://responsiblesourcing.hta.org.uk)

## STORAGE & ADVICE

### USEFUL TIPS

- For continued fantastic results with the hungriest plants we recommend that you begin feeding with Miracle-Gro® Performance Organics™ All Purpose Plant Food as soon as the leaves begin to pale.
- Compost should be **kept moist** at all times and not allowed to dry out. Avoid plants sitting in water. Outdoor container plants require **frequent watering**.

### STORAGE INSTRUCTIONS

- Keep the bag closed when in storage to prevent drying out.
- Store in a cool place, away from sun.
- Storage from one year to another may affect performance.
- Keep away from pesticides.
- Occasionally a white mould appears on the compost. This is **not harmful** to your plants and should disappear naturally.

### HEALTH & SAFETY ADVICE

- Use in a well ventilated place and avoid breathing in dust.
- Always wear gloves when gardening.
- Wash hands after use.
- Open bag carefully and reseal after use.

ALWAYS USE GLOVES



### APPROXIMATE FILL OPTIONS

- As a guide, this bag fills:



8  
MEDIUM POTS  
22 CM (9")



4  
LARGE POTS  
25 CM (10")



1  
LARGE CONTAINER  
42 CM (17")



6  
HANGING BASKETS  
30 CM (12")



Organic Farmers & Growers is one of the UK's leading organic certifiers, working with producers and processors to ensure their products meet the highest organic standards.



for more information visit [miracle-gro.co.uk](http://miracle-gro.co.uk)  
or call **01276 401300**



when filled. Volume may reduce by up to 10%\*3



TAKE CARE WHEN LIFTING



MADE IN THE UK



Evergreen Garden Care UK Ltd, 1 Archipelago, Lyon Way, Frimley, Surrey GU16 7ER  
EU Importer: Evergreen Garden Care France SAS, 4 Allée des Séquoias, 69760 LIMONEST, FRANCE, Tel: +353 818 882 479

Made under licence from OMS Investments, Inc.  
Miracle-Gro® is the trademark of OMS Investments, Inc.  
\*Registered Charity Number 1076640 \*See code of practice at [www.growingmedia.co.uk](http://www.growingmedia.co.uk)

BCXXXX



5 010272 192148 >

## EVERGREEN RESEARCH STATION, UK

Evergreen Research Station is our officially recognised **Research and Development Centre** in Levington, Suffolk. This unique centre is responsible for driving **new product development**, through **process and formulation, physical analysis and field biology**. In addition, the team of scientists ensure we maintain our **renowned quality** through on-going **raw material assessment, formulation preparation and product trials**.

The results from trials undertaken at the **extensive 19 acre site** in Levington are used to develop new products and to support our unique portfolio across northern Europe. Fertilisers and growing media are both tested here under the protection of a **2,500m² glasshouse** and outside in beds and borders, containers and hanging baskets.

Ordinary Garden Soil      Miracle-Gro® Performance Organics™ Peat Free All Purpose Compost



**GUARANTEED\*1  
GROWS PLANTS  
TWICE AS BIG!**

\*Our scientific trials prove that Miracle-Gro® Performance Organics™ Peat Free All Purpose Compost grows plants twice as big as ordinary garden soil.



SCIENTIFICALLY PROVEN AT  
**EVERGREEN  
RESEARCH STATION**  
RESEARCHED & TESTED BY EVERGREEN SCIENTISTS

OUR UNIQUE  
UK FACILITY