

Weedol[®] PS

PATHCLEAR[™]

MAPP: 16535



FIND OUT
MORE
ONLINE!



WHY CHOOSE WEEDOL[®] PS PATHCLEAR[™] WEEDKILLER?

KILLS weeds to the roots.

PREVENTS new weeds for up to 3 months by creating an invisible barrier.

INSTRUCTIONS FOR USE

FOR USE ONLY AS A HOME GARDEN WEEDKILLER. For use on natural surfaces not intended to bear vegetation and permeable surfaces overlying soil. **READ ALL SAFETY INSTRUCTIONS BEFORE USE.**

WHEN TO USE

Use March – September, when weeds are small and actively growing. Use on a dry day and do not apply in windy conditions. Do not apply if rain is expected within 6 hours of application. Avoid treating in waterlogged conditions.

Maximum number of treatments: 1 per year.



WHERE TO USE

Use on gravel, paths, drives, patios, along fences and walls and around established trees and shrubs. Apply carefully making sure product does not contact the foliage/trunk of these plants. **DO NOT** use on impermeable surfaces or surfaces underlaid with impermeable material, such as concrete, tarmac, decking and paved areas, where the weedkiller solution might run off onto adjacent land, or into drains or gutters. Direct spray away from water.

HOW TO USE

SHAKE WELL BEFORE USE. Always ensure the container is stored and carried upright when not spraying. Mark out the area to be treated in metre squares.

Maximum individual dose: 30 ml / 1 m².



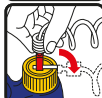
1. Remove Power Sprayer from side clip. Remove protective strip from battery compartment to activate. Unwrap plastic cover around hose. Pull out the red connector.



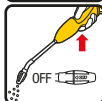
2. Insert the red connector into the red receptor on bottle cap until it clicks. Flip up receptor.



3. Flip open the Power Sprayer and lock into position. Twist nozzle to select spray setting. Spray weeds evenly, ensuring coverage on all the leaves.



4. After use, flip down red receptor to 'OFF' position.



5. Squeeze Power Sprayer trigger to empty nozzle. Turn nozzle to OFF and replace sprayer in the holder without disconnecting the red connector.

Visible effects in 14 days. Weed death may take up to 28 days (in cold weather activity is slower). To achieve maximum persistence of weed control, do not disturb or cultivate treated soil.

Replacing the batteries: Open battery compartment at the bottom of Power Sprayer, remove the used batteries and dispose of safely. Replace with four new AA batteries in the correct position as marked inside the battery compartment. Securely close battery compartment door. Never mix alkaline, carbon-zinc or rechargeable batteries.

CAUTION

Kills all green plant growth and prevents seed germination. Avoid contact by spray and spray drift with cultivated plants and desired vegetation. To avoid transfer to lawns and other desired vegetation, do not walk into treated areas until the product has dried. **DO NOT** apply to cultivated areas or lawns unless you want to kill them. If an area needs to be cultivated allow at least 6 months between treatment/replanting and dig the soil well to reduce risk of damage to subsequent planting. Where this or other products containing diflufenican are applied in successive years, diflufenican will build up in the soil. There is a risk of damage to subsequent plantings even if the soil is well dug.

SAFETY INSTRUCTIONS

TO AVOID RISKS TO HUMAN HEALTH AND THE ENVIRONMENT, COMPLY WITH THE INSTRUCTIONS FOR USE.

Protection during / in use

Keep off skin. Wash off splashes immediately. Wash hands and exposed skin after use. If medical advice is needed, have product container or label at hand. Do not eat, drink or smoke when using this product. Keep children and pets away from treated areas until spray has dried.

Environmental protection

Use appropriate containment to avoid environmental contamination. Do not contaminate water with the product or its container. Do not empty into drains. Direct application away from ponds and other surface water bodies. Do not apply in windy conditions to avoid spray drift onto other plants.

Storage and disposal

Keep out of reach of children. Keep away from food, drink and animal feeding stuffs. Keep product away from children and pets. **KEEP IN ORIGINAL CONTAINER,** tightly closed, in a safe place. Do not re-use container for any other purpose and dispose of safely. Dispose of contents/container to a household waste recycling centre as hazardous waste except for empty containers which can be disposed of by recycling. Contact your local council for details.

Contains 3.6 g/L glyphosate and 0.576 g/L diflufenican as a ready to use formulation (AL).



**Keep children and pets
away from treated areas
until spray has dried**



**Toxic to aquatic
life with long
lasting effects**

MAPP: 16535

PROTECT
FROM FROST

for more information visit
weedol.co.uk
or call +44 (0) 1276 401 300

Evergreen Garden Care UK Ltd,
1 Archipelago, Lyon Way, Frimley,
Surrey GU16 7ER
EU Importer: Evergreen Garden Care
France SAS, 4 Allée des Sardaques,
69760 LIMONEST, FRANCE,
Tel: +353 818 882 479



Recycle

Don't
Recycle

Don't
Recycle

