

Weedol®

GUN!

ULTRA TOUGH™

MAPP: 16670



FIND OUT
MORE
ONLINE!

UK
CA CE

WHY CHOOSE WEEDOL® GUN! ULTRA TOUGH™ WEEDKILLER?

SYSTEMIC weedkiller, killing perennial and other tough weeds down to the roots so they won't grow back..

CLEARs tough and deep-rooted weeds from large, overgrown spaces.

ACTs FAST, with results visible in just 24 hours.

INSTRUCTIONS FOR USE

FOR USE ONLY AS A HOME GARDEN WEEDKILLER.

For use on unwanted vegetation, areas not intended to bear vegetation and around garden plants.

READ ALL SAFETY INSTRUCTIONS BEFORE USE.

WHEN TO USE

Use April – November, when weeds are actively growing. Use on a dry, calm day.
Re-treat if rain falls within 6 hours of application.



WHERE TO USE

Ideal for ground clearance on untidy and overgrown areas. This includes around sheds and greenhouses, along fences, gravel areas, and other areas not intended for vegetation such as paths and drives. It can also be used for ground clearance before autumn or spring digging and killing old lawns before reseeding or turfing.

HOW TO USE

SHAKE WELL BEFORE USE. Always ensure the container is stored and carried upright when not spraying. Mark out the area to be treated in metre squares.



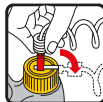
1. Remove Power Sprayer from side clip. Remove protective strip from battery compartment to activate. Unwrap plastic cover around hose. Pull out the red connector.



2. Insert the red connector into the red receptor on bottle cap until it clicks. Flip up receptor.



3. Flip open the Power Sprayer and lock into position. Twist nozzle to select spray setting. Spray weeds evenly, ensuring coverage on all the leaves.



4. After use, flip down red receptor to 'OFF' position.



5. Squeeze Power Sprayer trigger to empty nozzle. Turn nozzle to OFF and replace sprayer in the holder without disconnecting the red connector.

Visible effects in 24 hours. Weed death may take up to 28 days (in cold weather activity is slower).

Replacing the batteries: Open battery compartment at the bottom of Power Sprayer, remove the used batteries and dispose of safely. Replace with four new AA batteries in the correct position as marked inside the battery compartment. Securely close battery compartment door. Never mix alkaline, carbon-zinc or rechargeable batteries.

TIP

REPLANTING AND SOWING: Treated area can be re-planted 7 days after spraying (to allow the weedkiller to move to the roots before cultivation).

CAUTION

Weedol® Gun! Ultra Tough™ Weedkiller kills all green plant growth, including grass. DO NOT APPLY TO LAWNS OR OTHER WANTED PLANTS UNLESS YOU WANT TO KILL THEM. Direct spray away from ponds and other surface water bodies.

SAFETY INSTRUCTIONS

Protection during / in use

Keep off skin. Do not breathe spray. Wash hands and exposed skin after use. Keep children and pets away from treated areas until spray has dried.

Environmental protection

Use appropriate containment to avoid environmental contamination. Do not contaminate water with the product or its container. Do not empty into drains.

Storage and disposal

Keep away from food, drink and animal feeding stuffs. Keep product away from children and pets. KEEP IN ORIGINAL CONTAINER, tightly closed, in a safe place. EMPTY CONTAINER COMPLETELY and dispose of safely.

Container: Dispose of contents/container to a household waste recycling centre as hazardous waste except for empty containers which can be disposed of by recycling. Contact your local council for details.

Power Sprayer: Before disposing rinse the Sprayer through with water and dispose of at a local amenity recycling site.

RISK AND SAFETY INFORMATION

To avoid risks to human health and the environment, comply with the instructions for use.

Harmful to aquatic life with long lasting effects. Read carefully and follow all instructions. Do not eat, drink or smoke when using this product.

Keep out of reach of children.

If medical advice is needed, have product container or label at hand.

Dispose of contents/container to a household waste recycling centre as hazardous waste except for empty containers which can be disposed of by recycling. Contact your local council for details.

Contains 1, 2- Benzisothiazolin-3-one (BIT). May produce an allergic reaction.

MAPP: 16670

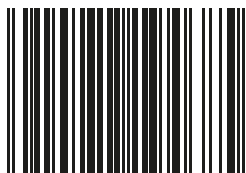
Contains 7.2 g/L glyphosate and 0.02 g/L pyraflufen-ethyl as a ready to use suspension formulation.

PROTECT
FROM
FROST



Keep children and pets
away from treated areas
until spray has dried

for more information visit
weedol.co.uk
or call +44 (0) 1276 401 300



5 010272 194685 >

Evergreen Garden Care UK Ltd,
1 Archipelago, Lyon Way, Frimley,
Surrey GU16 7ER
EU Importer: Evergreen Garden Care
France SAS, 4 Allée des Séquoias,
69760 LIMONEST, FRANCE,
Tel: +353 818 882 479

