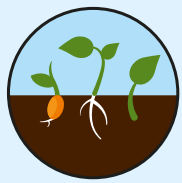
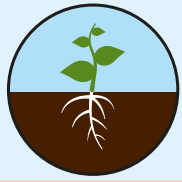


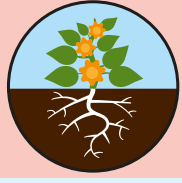
**SEED & CUTTING COMPOST**  
with added John Innes  
Perfect for all seeds.



**JOHN INNES NO.1**  
Perfect for all young plants  
and rooting cuttings.



**JOHN INNES NO.2**  
Perfect for re-potting.



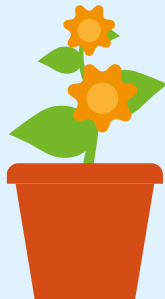
**JOHN INNES NO.3**  
Perfect for final re-potting of  
mature plants.



**ERICACEOUS COMPOST**  
with added John Innes  
Perfect for acid loving plants like  
Azaleas, Heathers & Rhododendrons.

## HOW TO USE

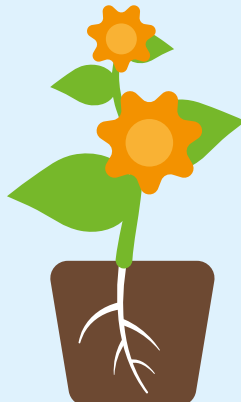
Our John Innes No.3 compost is ideal for final potting of plants. It has been specially developed, with a unique mix containing an optimal balance of nitrogen, phosphate, potassium and trace elements for maintaining plants growth and health. With its traditional mix of loam and grit, it provides the perfect structure for your plants roots. Use straight from the bag, it's as easy as that. We strongly recommend using Levington® Ericaceous Compost with added John Innes for acid loving plants like Azaleas, Rhododendrons or Heathers.



## POTTING-ON PLANTS

Re-potting is best done in the spring, when plants are actively growing.

1. Before re-potting, water plants well and allow to drain.
2. Put fresh compost in the bottom of a new pot.
3. Turn the old plant upside down and tap the pot sharply to release.
4. Place the plant in the middle of the new pot and add more compost, firming lightly around the root-ball.
5. Leave a space of at least 1 cm below the pot rim to allow adequate space for watering.
6. Water the plant well using a fine rose.



## FEEDING

After 8 weeks feed with a liquid plant food such as Levington® Tomorite® Concentrated Tomato Food.

## USEFUL TIPS

- Peat free will look and feel different. We recommend that you check before watering using the 'finger test'. Pop your finger about 3 cm into the compost. If it is dry, get watering, if not, wait a bit longer.
- Some plants are hungrier than others so may require feeding earlier. If leaves start to pale this is a sign to start feeding, and we recommend using a balanced liquid plant food.
- Try to avoid compost in pots drying out, and don't let them sit in water either, roots don't like being waterlogged!
- Sometimes you might see some white mould on your compost. This is not harmful to your plants and will disappear naturally.

## HEALTH, SAFETY & STORAGE ADVICE

- Use in a well ventilated place and avoid breathing in dust.
- Wash hands after use.
- Open bag carefully and reseal after use.
- Keep the bag closed when in storage to prevent drying out.
- Storage from one year to another may affect performance.
- Store in a cool place, away from direct sunlight.
- Keep away from pesticides.



**ALWAYS WEAR GLOVES**



Evergreen Garden Care UK Ltd,  
1 Archipelago, Lyon Way,  
Frimley, Surrey GU16 7ER  
EU Importer:  
Evergreen Garden Care France SAS,  
4 Allée des Séquoias, 69760 LIMONEST,  
FRANCE, Tel: +353 818 882 479



for more information visit  
**levington.co.uk**  
or call **01276 401300**



**TAKE CARE  
WHEN  
LIFTING**

**25  
LITRES**

when filled.  
Volume may  
reduce by up  
to 10%\*



Discover more  
about Levington

\*See code of practice at [www.growingmedia.co.uk](http://www.growingmedia.co.uk).

## HOW IT WORKS

John Innes composts are based on a traditional mixture of loam and sand or grit. Our unique peat free formulation has been checked and approved by the John Innes Manufacturers Association.



Plants will flourish with our exclusive blend containing the optimal level of nitrogen and all essential nutrients. This helps plants to flourish, supporting strong root development, beautiful foliage and colourful blooms.



Contains an optimal balance of nitrogen, phosphate, potassium and trace elements to give your plants all the feed they need for 8 weeks.



A special, traditional mix with loam and grit that secures an open texture for the roots to develop and excess moisture to drain freely.



Optimum drainage system prevents excess moisture.

## HOW MUCH COMPOST IS IN THE BAG

**25**

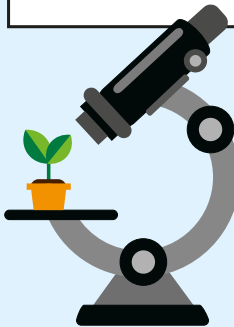
FILLS 25 SMALL  
1 LITRE POTS  
12 CM (5")

**5**

FILLS 5 MEDIUM  
5 LITRE POTS  
22 CM (9")

## OUR STORY

Established in 1967, Levington has been providing expertise, research and innovation into compost for over 50 years. When it comes to compost, Levington has been the gardener's choice for decades.



At our officially recognised research station in Levington, Suffolk, we are constantly innovating and testing for the best combinations of ingredients in compost to ensure your plants are strong and healthy.

## PEAT FREE

**We are dedicated to protecting the environment and this compost is 100% peat free.**

Working with peat free composts is different to peat composts, however you can still achieve fantastic results. Going peat free is better for the plants and the planet.

We are actively working on improving the responsible sourcing profile of our compost mixes year on year. Levington® compost contains forest by-products, carefully processed to help you grow plants that improve your environment and make the world a more beautiful place.

We have helped restore **3000 hectares of peatland** over the last 30 years, the equivalent of 5606 football pitches!

### RESPONSIBILITY INDEX



For further information, scan the QR code or visit:  
[responsiblesourcing.org.uk](http://responsiblesourcing.org.uk)

**THIS BAG IS MADE  
FROM AT LEAST 60%  
RECYCLED MATERIAL**



**RECYCLE AT  
RECYCLING  
POINT**

Don't recycle  
at home



5 010272 194005 >

BG9503



**MADE IN  
THE UK**