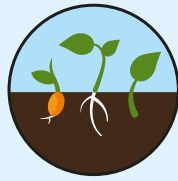
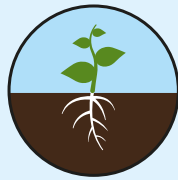


**SEED COMPOST**  
with added John Innes  
Perfect for all seeds.



**JOHN INNES NO.1**  
Perfect for all young plants and  
rooting cuttings.



**JOHN INNES NO.2**  
Perfect for re-potting.



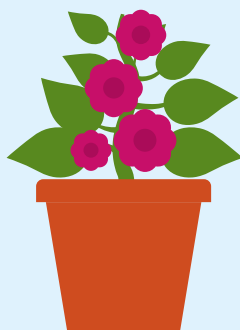
**JOHN INNES NO.3**  
Perfect for final re-potting of  
mature plants.



**ERICACEOUS COMPOST**  
with added John Innes  
Perfect for acid loving plants like  
Azaleas, Heathers & Rhododendrons.

## HOW TO USE

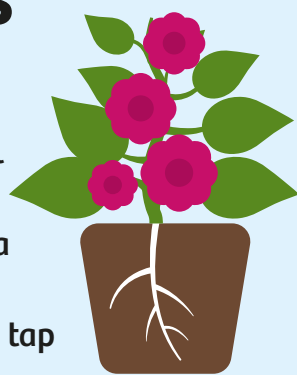
Our Peat Free Ericaceous Compost with added John Innes is ideal for final potting of acid loving plants like Azaleas, Rhododendrons or Heathers. Use straight from the bag, it's as easy as that.



## POTTING-ON PLANTS

Re-potting is best done in the spring, when plants are actively growing.

1. Before re-potting, water plants well and allow to drain.
2. Put fresh compost in the bottom of a new pot.
3. Turn the old plant upside down and tap the pot sharply to release.
4. Place the plant in the middle of the new pot and add more compost, firming lightly around the root-ball.
5. Leave a space of at least 1 cm below the pot rim to allow adequate space for watering.
6. Water the plant well using a fine rose.



## FEEDING

After 6 weeks feed with Levington® Sulphate of Iron +.

## USEFUL TIPS

- Peat free will look and feel different. We recommend that you check before watering using the 'finger test'. Pop your finger about 3 cm into the compost. If it is dry, get watering, if not, wait a bit longer
- Some plants are hungrier than others so may require feeding earlier. If leaves start to pale this is a sign to start feeding, and we recommend using an ericaceous plant food.
- Try to avoid compost in pots drying out, and don't let them sit in water either, roots don't like being waterlogged!
- Sometimes you might see some white mould on your compost. This is not harmful to your plants and will disappear naturally.

## HEALTH, SAFETY & STORAGE ADVICE

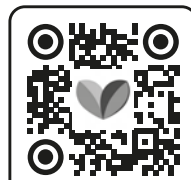
- Use in a well ventilated place and avoid breathing in dust.
- Wash hands after use.
- Open bag carefully and reseal after use.
- Keep the bag closed when in storage to prevent drying out.
- Storage from one year to another may affect performance.
- Store in a cool place, away from direct sunlight.
- Keep away from pesticides.



ALWAYS WEAR GLOVES



Evergreen Garden Care UK Ltd,  
1 Archipelago, Lyon Way,  
Frimley, Surrey GU16 7ER  
EU Importer:  
Evergreen Garden Care France SAS,  
4 Allée des Séquoias, 69760 LIMONEST,  
FRANCE, Tel: +353 818 882 479



Discover more  
about Levington

for more information visit  
[levington.co.uk](http://levington.co.uk)  
or call 01276 401300



TAKE CARE  
WHEN  
LIFTING

**25**  
LITRES

when filled.  
Volume may  
reduce by up  
to 10%\*

\*See code of practice at [www.growingmedia.co.uk](http://www.growingmedia.co.uk).

## HOW IT WORKS

Our Peat Free Ericaceous Compost with added John Innes has been specially developed, with a unique combination of 14 vital minerals for maintaining plants growth and health. With its traditional mix of loam and grit, it provides the perfect structure for your plants roots.



A **unique mix** with loam and grit that secures an open texture for the **roots to develop**, excess **moisture to drain** freely and special pH for acid-loving plants.

Optimum **drainage** system prevents excess moisture.



Our exclusive wood fibre is infused with organic nitrogen, meaning more is available for the plant, as well as ensuring the optimum balance of air and water for the roots to grow strong and healthy.



This compost is specially balanced with 14 vital minerals and **provides 6 weeks of plant feed**, to give your plants a great start.

## HOW MUCH COMPOST IS IN THE BAG

**25**

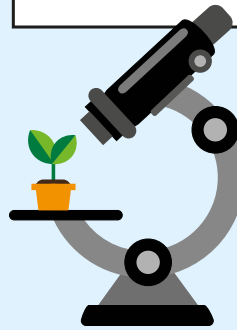
FILLS 25  
SMALL POTS  
12 CM (5")

**5**

FILLS 5  
MEDIUM POTS  
22 CM (9")

## OUR STORY

Established in 1967, Levington has been providing expertise, research and innovation into compost for over 50 years. When it comes to compost, Levington has been the gardener's choice for decades.



At our officially recognised research station in Levington, Suffolk, we are constantly innovating and testing for the best combinations of ingredients in compost to ensure your plants are strong and healthy.

## PEAT FREE

We are dedicated to protecting the environment and this compost is **100% peat free**.

Working with peat free composts is different to peat composts, however you can still achieve fantastic results. Going peat free is better for the plants and the planet.

We are actively working on improving the responsible sourcing profile of our compost mixes year on year. Levington® compost contains forest by-products, carefully processed to help you grow plants that improve your environment and make the world a more beautiful place.

We have helped restore **3000 hectares of peatland** over the last 30 years, the equivalent of 5606 football pitches!

### RESPONSIBILITY INDEX



For further information, scan the QR code or visit:  
[responsiblesourcing.hta.org.uk](http://responsiblesourcing.hta.org.uk)



THIS BAG IS MADE FROM  
60% RECYCLED MATERIAL



Don't recycle at home

