

## HOW TO USE

Our peat free multi purpose compost with added John Innes is ideal for most of your gardening uses. It has been specially developed, containing essential plant food for 6 weeks, to give your plants a great start. Use straight from the bag, it's as easy as that.



We strongly recommend using Levington® Ericaceous compost for acid loving plants like Azaleas, Rhododendrons or Heathers.

## CONTAINERS

1. Ensure the container has sufficient drainage holes, then fill with compost.
2. Add your chosen flowers to the container.
3. Firm lightly around the plants and water thoroughly.



## HANGING BASKETS

1. Line the basket if necessary and part fill it with compost.
2. Insert plants through sides of the basket where possible to ensure a ball of colour.
3. Fill the basket with compost and arrange plants on the top with trailing ones around the sides.
4. After everything is planted, firm lightly and water thoroughly.



## BEDS AND BORDERS

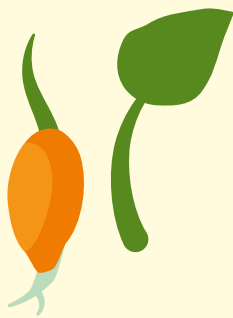
1. Water the plant thoroughly.
2. Dig a hole twice the size of the root ball.
3. Part fill the hole with equal quantities of compost and soil.
4. Make sure the plant is at the same level above the ground as in the original pot, firm lightly.



## SEEDLINGS

For best results we recommend Levington® Peat Free Seed and Cutting Compost.

1. Fill individual pots with compost and level off.
2. Prick out seedlings carefully, put them into the individual pots and firm lightly.



## USEFUL TIPS

- Peat free will look and feel different. We recommend that you check before watering using the 'finger test'. Pop your finger about 3 cm into the compost. If it is dry, get watering, if not, wait a bit longer
- Some plants are hungrier than others so may require feeding earlier. If leaves start to pale this is a sign to start feeding, and we recommend using Miracle-Gro® Plant Food.
- Try to avoid compost in pots drying out, and don't let them sit in water either, roots don't like being waterlogged!
- Sometimes you might see some white mould on your compost. This is not harmful to your plants and will disappear naturally.

## HEALTH, SAFETY & STORAGE ADVICE

- Use in a well ventilated place and avoid breathing in dust.
- Wash hands after use.
- Open bag carefully and reseal after use.
- Keep the bag closed when in storage to prevent drying out.
- Storage from one year to another may affect performance.
- Store in a cool place, away from direct sunlight.
- Keep away from pesticides.



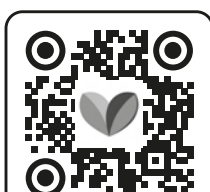
ALWAYS WEAR GLOVES



Evergreen Garden Care UK Ltd,  
1 Archipelago, Lyon Way,  
Frimley, Surrey GU16 7ER  
EU Importer:  
Evergreen Garden Care France SAS,  
4 Allée des Séquoias, 69760 LIMONEST,  
FRANCE, Tel: +353 818 882 479



MADE IN THE UK



Discover more about Levington

for more information visit  
[levington.co.uk](http://levington.co.uk)  
or call 01276 401300

40 LITRES

when filled. Volume may reduce by up to 10%\*



TAKE CARE WHEN LIFTING

\*See code of practice at [www.growingmedia.co.uk](http://www.growingmedia.co.uk).

## HOW IT WORKS



Levington® Peat Free Multi Purpose Compost with added John Innes provides a balance of nutrients that helps promote **stronger roots and healthier plants**.



Optimum **drainage** system prevents excess moisture.



NITROGEN (N)	For greener leaves and healthy shoots
PHOSPHATE (P)	For strong root development
POTASSIUM (K)	For fruit and flowers
TRACE ELEMENTS	Essential for all round plant health and disease resistance



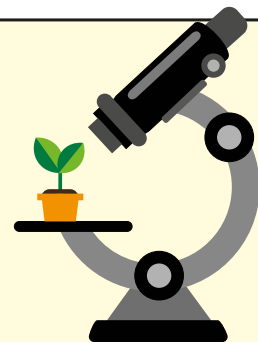
Green compost is a rich organic material ideal for helping your plants to thrive. By turning green garden waste into good quality compost we are part of the circular economy, and you can **grow plants that improve your environment**.

## HOW MUCH COMPOST IS IN THE BAG

<b>40</b>	<b>8</b>	<b>4</b>	<b>6</b>
FILLS 40 SMALL POTS 12 CM (5")	FILLS 8 MEDIUM POTS 22 CM (9")	FILLS 4 LARGE POTS 25 CM (10")	FILLS 6 HANGING BASKETS 30 CM (12")

## OUR STORY

Established in 1967, Levington has been providing expertise, research and innovation into compost for over 50 years. When it comes to compost, Levington has been the gardener's choice for decades.



At our officially recognised research station in Levington, Suffolk, we are constantly innovating and testing for the best combinations of ingredients in compost to ensure your plants are strong and healthy.

## PEAT FREE

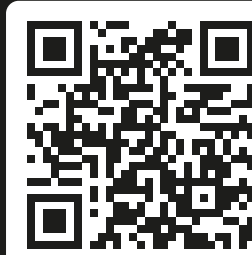
We are dedicated to protecting the environment and this compost is **100% peat free**.

Working with peat free composts is different to peat composts, however you can still achieve fantastic results. Going peat free is better for the plants and the planet.

We are actively working on improving the responsible sourcing profile of our compost mixes year on year. Levington® compost contains forest by-products, carefully processed to help you grow plants that improve your environment and make the world a more beautiful place.

We have helped restore **3000 hectares of peatland** over the last 30 years, the equivalent of 5606 football pitches!

### RESPONSIBILITY INDEX



For further information, scan the QR code or visit: [responsiblesourcing.hta.org.uk](http://responsiblesourcing.hta.org.uk)



THIS BAG IS MADE FROM 60% RECYCLED MATERIAL

