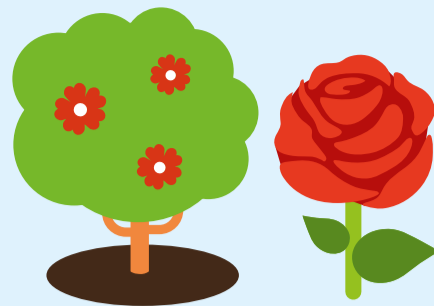


## HOW TO USE

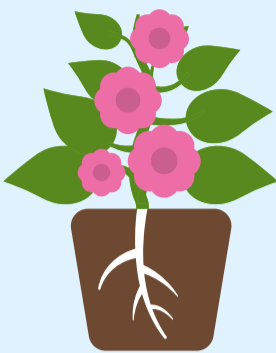
This ready to use compost has been specially formulated to avoid the need to create your own mix. Use straight from the bag, it's as easy as that. Can also be used for ericaceous shrubs.



## POTTING-ON PLANTS

Repotting is best done in the spring, when plants are actively growing.

1. Before repotting, water plants well and allow to drain.
2. Put fresh compost in the bottom of a larger pot.
3. To remove the plant, turn upside down, tap the bottom of the plant pot to help release the plant.
4. Gently rub the root ball to make it less compact and tease out the roots, this will make it easier for the plant to establish.
5. Place the plant in the middle of the new pot, add more compost, firm lightly around the plant and water thoroughly.



## BEDS AND BORDERS

1. Dig a hole twice the size of the root ball.
2. Part fill the hole with equal quantities of compost and soil.
3. Make sure the plant is at the same level above the ground as in the original pot, firm lightly.



## DIVIDING PERENNIALS

1. Divide large clumps of perennial plants by digging them carefully out of the ground, taking care not to damage the roots.
2. Use two garden forks to prise the clump apart or simply cut it up.
3. Re-plant part of the clump using an equal mix of compost and soil in borders, firm lightly.
4. To grow new plants in pots pour compost direct into the pot.



## USEFUL TIPS

- Peat free will look and feel different. We recommend that you check before watering using the 'finger test'. Pop your finger about 3 cm into the compost. If it is dry, get watering, if not, wait a bit longer
- Some plants are hungrier than others so may require feeding earlier. If leaves start to pale this is a sign to start feeding, and we recommend using Miracle-Gro® Rose & Shrub Plant Food.
- Try to avoid compost in pots drying out, and don't let them sit in water either, roots don't like being waterlogged!
- Sometimes you might see some white mould on your compost. This is not harmful to your plants and will disappear naturally.

## HEALTH, SAFETY & STORAGE ADVICE

- Use in a well ventilated place and avoid breathing in dust.
- Wash hands after use.
- Open bag carefully and reseal after use.
- Keep the bag closed when in storage to prevent drying out.
- Storage from one year to another may affect performance.
- Store in a cool place, away from direct sunlight.
- Keep away from pesticides.



ALWAYS WEAR GLOVES



Evergreen Garden Care UK Ltd,  
1 Archipelago, Lyon Way,  
Frimley, Surrey GU16 7ER  
EU Importer:  
Evergreen Garden Care France SAS,  
4 Allée des Séquoias, 69760 LIMONEST,  
FRANCE, Tel: +353 818 882 479



MADE IN THE UK



Discover more about Levington

for more information visit  
[levington.co.uk](http://levington.co.uk)  
or call 01276 401300

50 LITRES  
when filled.  
Volume may reduce by up to 10%\*



TAKE CARE WHEN LIFTING

\*See code of practice at [www.growingmedia.co.uk](http://www.growingmedia.co.uk).

## HOW IT WORKS



The special mix secures air for the roots to breathe and holds water to help your roses, trees and shrubs grow stronger roots.

Optimum drainage system prevents excess moisture.



Our special wetting agent enables compost to soak and absorb higher levels of water without getting waterlogged.



Green compost is a rich organic material ideal for helping your plants to thrive. By turning green garden waste into good quality compost we are part of the circular economy, and you can grow plants that improve your environment.

## HOW MUCH COMPOST IS IN THE BAG

50

FILLS 50 SMALL POTS  
12 CM (5")

10

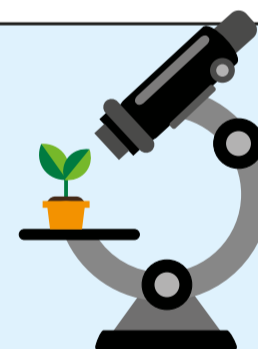
FILLS 10 MEDIUM POTS  
22 CM (9")

5

FILLS 5 LARGE POTS  
25 CM (10")

## OUR STORY

Established in 1967, Levington has been providing expertise, research and innovation into compost for over 50 years. When it comes to compost, Levington has been the gardener's choice for decades.



At our officially recognised research station in Levington, Suffolk, we are constantly innovating and testing for the best combinations of ingredients in compost to ensure your plants are strong and healthy.

## PEAT FREE

We are dedicated to protecting the environment and this compost is 100% peat free.

Working with peat free composts is different to peat composts, however you can still achieve fantastic results. Going peat free is better for the plants and the planet.

We are actively working on improving the responsible sourcing profile of our compost mixes year on year. Levington® compost contains forest by-products, carefully processed to help you grow plants that improve your environment and make the world a more beautiful place.

We have helped restore 3000 hectares of peatland over the last 30 years, the equivalent of 5606 football pitches!

### RESPONSIBILITY INDEX



ACCREDITED MEMBER  
RESPONSIBLE SOURCING SCHEME



For further information, scan the QR code or visit:  
[responsiblesourcing.hta.org.uk](http://responsiblesourcing.hta.org.uk)



xxxxx®



THIS BAG IS MADE FROM 60% RECYCLED MATERIAL

