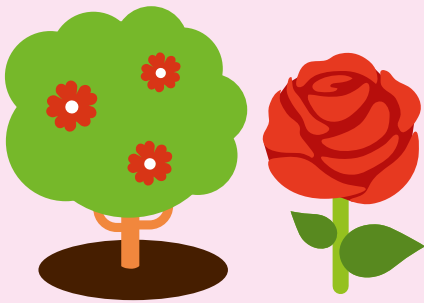


# HOW TO USE

Our soil conditioner is made up of peat free composted material – perfect for roses, trees and shrubs. Use straight from the bag, it's as easy as that.  
**Not for use in pots/containers.**



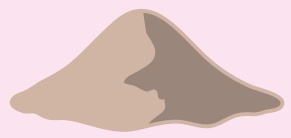
## SANDY SOILS

Levington® Soil Conditioner will improve the structure of your soil, by adding humus to help hold moisture and nutrients.



## CLAY SOILS

On clay soil, use Levington® Soil Conditioner to improve the drainage, helping excess moisture drain away, leaving your plant roots healthy.



## WEED PREVENTION

For effective weed suppression a minimum of 5 cm (2") of Levington® Soil Conditioner is required over the flowerbeds. It should be applied to weed-free soil and maintained once a year.



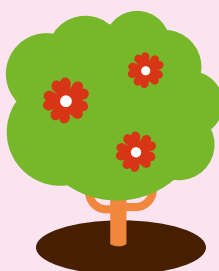
## SOIL IMPROVEMENT

For general improvement, fork a 2.5 cm (1") layer of Levington® Soil Conditioner into the top 10 cm (4") of soil.



## PLANTING SHRUBS

- For shrubs and roses, mix 5 litres of Levington® Soil Conditioner with Levington® Fish, Blood & Bone Multi Purpose Plant Food. For trees, mix 10 litres of Levington® Soil Conditioner with Levington® Fish, Blood & Bone Multi Purpose Plant Food (see pack for details).
- When the compost mixture has been prepared, dig a hole twice the size of the root ball.
- Plant using a 50/50 mixture of soil, and the prepared compost. This pack is sufficient to plants 10 roses or 5 trees.



## MULCHING

Use a mulch around your shrubs and flowerbeds to keep in water and suppress weeds. Using a fork (or even your hands), spread an even layer of about 2.5 cm to 5 cm (1" to 2") of Levington® Soil Conditioner over the compost or soil. This pack covers an area up to 2 m × 1 m.



# USEFUL TIPS

- Sometimes you might see some white mould on your soil improver. This is not harmful to your plants and will disappear naturally.

# HEALTH, SAFETY & STORAGE ADVICE

- Use in a well ventilated place and avoid breathing in dust.
- Wash hands after use.
- Open bag carefully and reseal after use.
- Keep the bag closed when in storage to prevent drying out.
- Storage from one year to another may affect performance.
- Store in a cool place, away from direct sunlight.
- Keep away from pesticides.



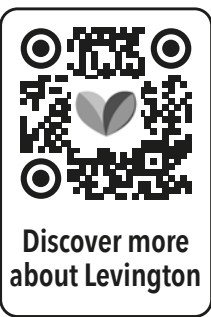
ALWAYS WEAR GLOVES



Evergreen Garden Care UK Ltd,  
1 Archipelago, Lyon Way,  
Frimley, Surrey GU16 7ER  
EU Importer:  
Evergreen Garden Care France SAS,  
4 Allée des Séquoias, 69760 LIMONEST,  
FRANCE, Tel: +353 818 882 479



\*See code of practice at [www.growingmedia.co.uk](http://www.growingmedia.co.uk).



50  
LITRES  
when filled.  
Volume may  
reduce by up  
to 10%\*



TAKE CARE  
WHEN LIFTING

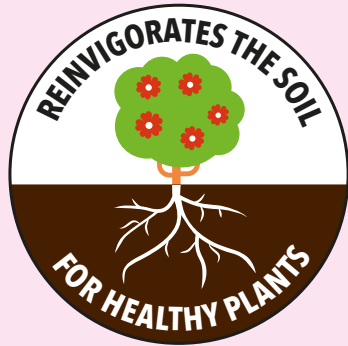
# HOW IT WORKS



Enriches poor soil with organic matter, which creates a better growing environment for your plants and flowers.  
Also great for suppressing weeds when used as a mulch.

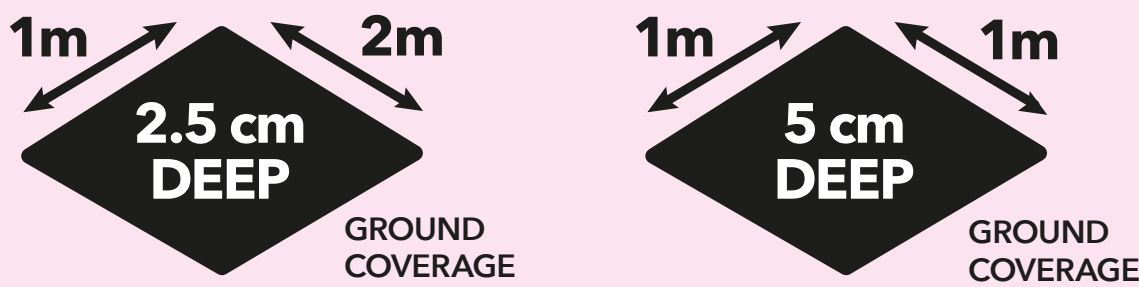


Levington® Soil Conditioner is a blend of composted materials which improves soil structure and drainage of clay or sandy soils.



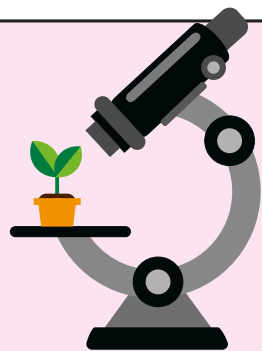
Levington® Soil Conditioner is rich in nutrients which reinvigorates the soil's health and increases the overall vitality of roses, flowers, fruits and vegetables. Resulting in stronger healthier plants.

# HOW MUCH COMPOST IS IN THE BAG



# OUR STORY

Established in 1967, Levington has been providing expertise, research and innovation into compost for over 50 years. When it comes to compost, Levington has been the gardener's choice for decades.



At our officially recognised research station in Levington, Suffolk, we are constantly innovating and testing for the best combinations of ingredients in compost to ensure your plants are strong and healthy.

# PEAT FREE

We are dedicated to protecting the environment and this compost is 100% peat free.

Working with peat free composts is different to peat composts, however you can still achieve fantastic results. Going peat free is better for the plants and the planet.

We are actively working on improving the responsible sourcing profile of our compost mixes year on year. Levington® compost contains forest by-products, carefully processed to help you grow plants that improve your environment and make the world a more beautiful place.

We have helped restore 3000 hectares of peatland over the last 30 years, the equivalent of 5606 football pitches!

## RESPONSIBILITY INDEX



For further information, scan the QR code or visit: [responsiblesourcing.org.uk](http://responsiblesourcing.org.uk)



THIS BAG IS MADE FROM AT LEAST 60% RECYCLED MATERIAL

