

Miracle-Gro®

PEAT FREE

PREMIUM

All Purpose Compost

ROOTED IN SCIENCE



CONTAINS CONTINUOUS RELEASE PLANT FOOD



14 VITAL NUTRIENTS

This compost contains a careful balance of **14 vital nutrients** that help your plants to grow strong and healthy - including nitrogen for green growth, phosphorus for healthy roots and potassium to give great flowers and fruiting.



WATERLOCK TECHNOLOGY

Absorbs more water than ordinary compost.



FIBRE SMART™ TECHNOLOGY

Fibre Smart™ technology creates woodfibres that are infused with organic nitrogen and ensure your plants have the perfect balance of air and water to grow strong roots.

HOW TO USE



ALWAYS WEAR GLOVES

CONTAINERS & BASKETS



Place a layer of compost in the **base of the pot**.



Tap out the plant from the old pot, loosen the root ball and **place in the centre of the pot**.

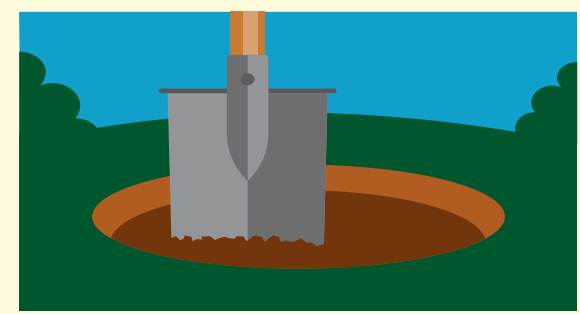


Fill the space around the root ball, ensuring the compost level covers all the roots.

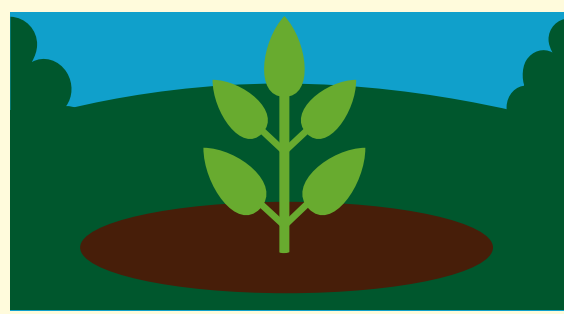


Firm lightly, **water thoroughly** and let drain.

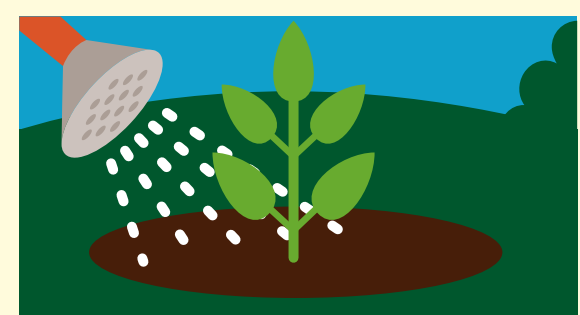
BEDS & BORDERS



Dig a hole **twice the size of the root ball**.

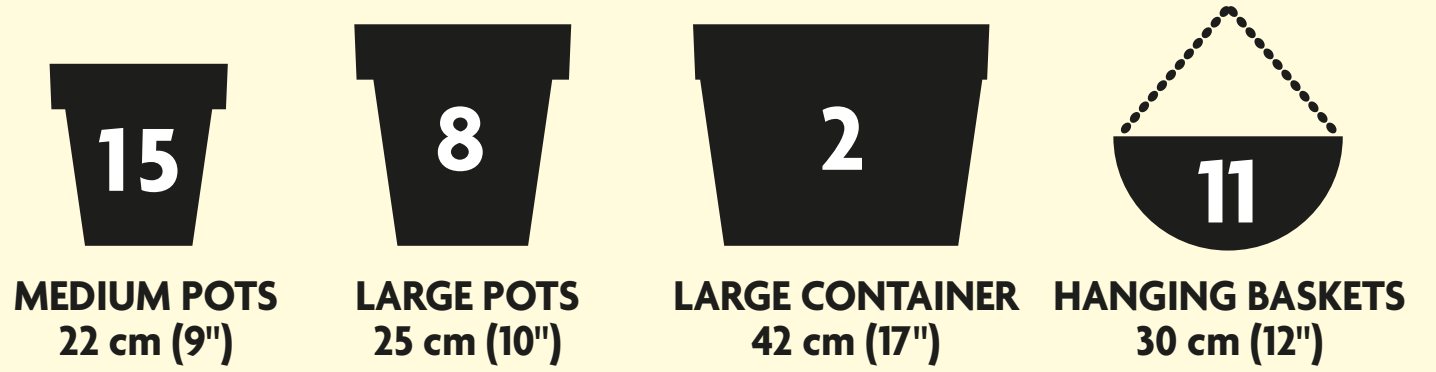


Position the plant and **fill with 50% soil and 50% compost** and firm around the base.



Water thoroughly.

HOW MUCH COMPOST IS IN THIS BAG?



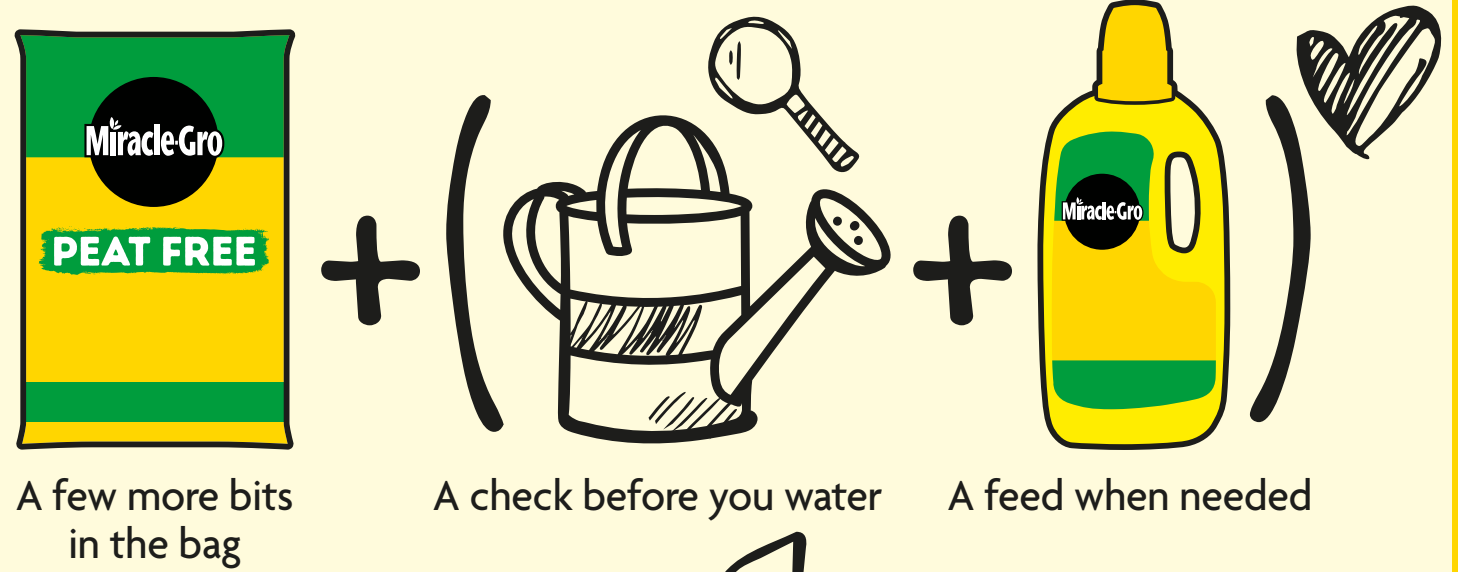
USEFUL TIPS

- Some plants are hungrier than others so may require feeding earlier. If leaves start to pale this is a sign to start feeding, and we recommend using a **Miracle-Gro® Plant Food**.
- Try to avoid compost in pots drying out, and don't let them sit in water either, roots don't like being waterlogged!
- Outdoor pots and containers might need more water in the summer, so always check first with the 'finger test' – pop your finger about 3 cm into the compost. If dry, get watering. If not, wait a bit longer.
- Sometimes you might see some white mould on your compost. **This is not harmful** to your plants and will disappear naturally.
- For all ericaceous (acid-loving) plants we strongly recommend using **Miracle-Gro® Peat Free Premium Azalea, Camellia, Rhododendron Ericaceous Plants Compost**.

CARING FOR PLANTS & THE PLANET

PEAT FREE + TLC = BETTER (PLANTS+ PLANET)

GOING PEAT FREE MEANS:



A few more bits in the bag

A check before you water

A feed when needed



Better for your plants, better for the planet

NOT ALL PEAT FREE COMPOST IS CREATED EQUAL

#FORPLANTSFORPLANET

RESPONSIBLE SOURCING

We are actively working on improving the responsible sourcing profile of our compost mixes year on year. Miracle-Gro® compost contains forest by-products, carefully processed to help you grow plants that improve your environment and make the world a more beautiful place.

With our partners we have **restored more than 3,000 hectares of peatland** in the past 30 years.

RESPONSIBILITY INDEX



For further information, scan the QR code or visit: responsiblesourcing.hta.org.uk



THIS BAG IS MADE FROM 60% RECYCLED MATERIAL



Don't recycle at home

HEALTH, SAFETY & STORAGE ADVICE

- Use in a well ventilated place and avoid breathing in dust.
- Always wear gloves.
- Wash hands after use.
- Open bag carefully and reseal after use.
- Keep the bag closed when in storage to prevent drying out.
- Storage from one year to another may affect performance.
- Store in a cool place, away from direct sunlight.
- Keep away from pesticides.



We are proudly supporting **GREENFINGERS CHARITY*2**

for more information visit miracle-gro.co.uk or call **01276 401300**



5 010272 200867 >



Evergreen Garden Care UK Ltd, 1 Archipelago, Lyon Way, Frimley, Surrey GU16 7ER
EU Importer: Evergreen Garden Care France SAS, 4 Allée des Séquoias, 69760 LIMONEST, FRANCE, Tel: +353 818 882 479
Made under licence from OMS Investments, Inc. Miracle-Gro® is the trademark of OMS Investments, Inc.
*Registered Charity Number 1076640
**See code of practice at www.growingmedia.co.uk



75 litres when filled – volume may reduce by up to 10%*3



TAKE CARE WHEN LIFTING



MADE IN THE UK

Ordinary Garden Soil

Miracle-Gro® Premium Peat Free All Purpose Compost

GUARANTEED GROWS PLANTS TWICE AS BIG!*

*Our scientific trials prove that Miracle-Gro Premium Peat Free All Purpose Compost grows plants **twice as big** as ordinary garden soil.