



PEAT FREE

PREMIUM

Azalea, Camellia Rhododendron

Ericaceous Plants Compost

ROOTED IN SCIENCE



FORTIFIED WITH IRON

This compost is **fortified with iron** which is **absorbed by roots**, making the **leaves greener**.



WATERLOCK TECHNOLOGY

Absorbs more water than ordinary compost.



CONTAINS CONTINUOUS RELEASE PLANT FOOD



FIBRE SMART™ TECHNOLOGY

Fibre Smart™ technology creates woodfibres that are infused with organic nitrogen and ensure your plants have the perfect balance of air and water to grow strong roots.

HOW TO USE

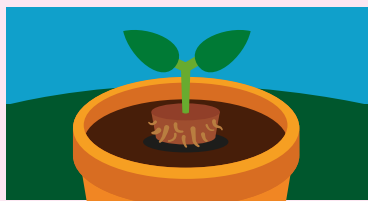


POTS & PATIO PLANTERS

It's time to repot when: • The plant is overgrown and 'root bound' (densely wrapped roots). • Roots are growing out of the drainage holes. • The plant's lower leaves turn yellow or drop off. • The compost is faded or crusty.



Place a layer of compost in the **base of the pot**.



Tap out the plant from the old pot, loosen the root ball and **place in the centre of the pot**.

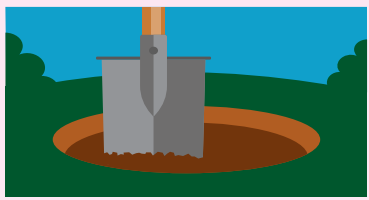


Fill the space around the root ball, ensuring the compost level covers all the roots.

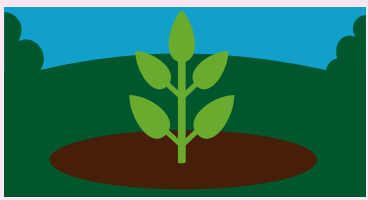


Firm lightly, **water thoroughly** and let drain. We recommend using Miracle-Gro® Azalea, Camellia, Rhododendron Plant Food to make sure your plants continue to thrive.

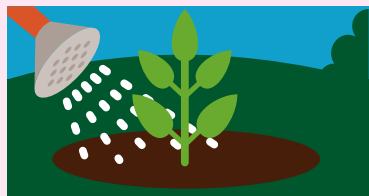
BEDS & BORDERS



Dig a hole **twice the size of the root ball**.



Position the plant and **fill with 50% soil and 50% compost** and firm around the base.



Water thoroughly. We recommend using Miracle-Gro® Azalea, Camellia, Rhododendron Plant Food to make sure your plants continue to thrive.

HOW MUCH COMPOST IS IN THIS BAG?

4

MEDIUM POTS
22 cm (9")

2

LARGE POTS
25 cm (10")

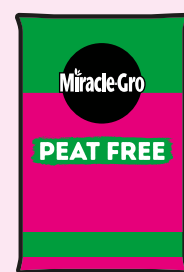
USEFUL TIPS

- Some plants are hungrier than others so may require feeding earlier. If leaves start to pale this is a sign to start feeding, and we recommend using a **Miracle-Gro® Plant Food**.
- Try to avoid compost in pots drying out, and don't let them sit in water either, roots don't like being waterlogged!
- Outdoor pots and containers might need more water in the summer, so always check first with the 'finger test' – pop your finger about 3 cm into the compost. If dry, get watering. If not, wait a bit longer.
- Sometimes you might see some white mould on your compost. **This is not harmful** to your plants and will disappear naturally.

CARING FOR PLANTS & THE PLANET

PEAT FREE + TLC = BETTER (PLANTS+ PLANET)

GOING PEAT FREE MEANS:



A few more bits
in the bag



A check before you water



A feed when needed



Better for your plants,
better for the planet

**NOT ALL PEAT
FREE COMPOST IS
CREATED EQUAL**

#FORPLANTSFORPLANET

RESPONSIBLE SOURCING

We are actively working on improving the responsible sourcing profile of our compost mixes year on year. Miracle-Gro® compost contains forest by-products, carefully processed to help you grow plants that improve your environment and make the world a more beautiful place.

With our partners we have restored more than **3,000 hectares of peatland** in the past 30 years.

RESPONSIBILITY INDEX



For further information, scan the QR code or visit:
responsiblesourcing.hta.org.uk



**THIS BAG IS MADE FROM
60% RECYCLED MATERIAL**



HEALTH, SAFETY & STORAGE ADVICE

- Use in a well ventilated place and avoid breathing in dust.
- Always wear gloves.
- Wash hands after use.
- Open bag carefully and reseal after use.
- Keep the bag closed when in storage to prevent drying out.
- Storage from one year to another may affect performance.
- Store in a cool place, away from direct sunlight.
- Keep away from pesticides.



We are proudly supporting
**GREENFINGERS
CHARITY***



for more information visit
miracle-gro.co.uk
or call **01276 401300**



5 010272 200904 >



EVERGREEN
Garden Care

Evergreen Garden Care UK Ltd, 1 Archipelago,
Lyon Way, Frimley, Surrey GU16 7ER
EU Importer: Evergreen Garden Care France SAS,
4 Allée des Séquoias, 69760 LIMONEST, FRANCE,
Tel: +353 818 882 479

Made under licence from OMS Investments, Inc.
Miracle-Gro® is the trademark of OMS Investments, Inc.

*Registered Charity Number 1076640

*3See code of practice at www.growingmedia.co.uk

20L

20 litres when filled –
volume may reduce
by up to 10%*



BCXXX



Ordinary
Garden Soil

Miracle-Gro®
Premium Peat Free
All Purpose Compost

**GUARANTEED GROWS PLANTS
TWICE AS BIG!***

*Our scientific trials prove that Miracle-Gro Premium Peat Free All Purpose Compost grows plants **twice as big** as ordinary garden soil.