

Miracle-Gro®

PEAT FREE

PREMIUM

Mediterranean & Citrus Compost

ROOTED IN SCIENCE



OPTIMUM pH FORMULA

Contains an **optimum balanced formula** with the ideal pH to ensure a long life full of flowers and fruits.



IRON FORTIFIED

This compost is **fortified with iron** which is a mineral nutrient that is **absorbed by roots** and the result is that the **leaves become greener**.



11 VITAL NUTRIENTS

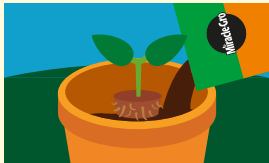
This compost contains a careful balance of **11 vital nutrients** that help your plants to grow strong and healthy - including nitrogen for green growth, phosphorus for healthy roots and potassium to give great flowers and fruiting.

HOW TO USE



Ideal for Mediterranean plants like bougainvillea, palm trees, orange trees, lemon trees and lime trees. Perfect for use in pots, containers and hanging baskets. Use the compost directly from the bag. Do not mix with other materials. Firm only lightly.

POTTING



Place compost in the bottom of the pot and put the root ball on top of this layer.



Fill in around the edges with more compost ensuring the top feeder roots are covered with 2 cm of fresh compost.



Water well and keep in the shade for a few weeks to allow new roots to grow.

- ♥ **WATERING:** In hard water areas use rainwater whenever possible to maintain the slightly acid conditions of the compost. Allow the surface to dry out between waterings, then water thoroughly but do not allow to stand in water.
- ♥ **FEEDING:** Citrus trees actively grow all year round. In summer they produce new leaves and flowers and in winter the fruits ripen. From March to September feed every 2 weeks with a balanced feed such as Miracle-Gro® All Purpose Concentrated Plant Food for bushy growth and to prevent fruit drop and leaf yellowing.
- ♥ **TEMPERATURE:** During winter keep the plants in a cool, frost-free place such as a cool conservatory, greenhouse or unheated room. Aim for a minimum temperature of 10°C.

HOW MUCH COMPOST IS IN THIS BAG?



MEDIUM POTS
22 cm (9")



LARGE POT
25 cm (10")



HANGING BASKET
30 cm (12")

USEFUL TIPS

- ♥ Greenhouses and conservatories will usually be too hot for citrus trees in summer. Move them outside when all danger of frost has passed. Place in partial shade for the first 3 weeks to prevent leaf scorch.
- ♥ Spray the plants daily with water to keep them cool and encourage pollination of flowers.
- ♥ For a healthy plant, pot-on every 2 years into a pot one size larger.
- ♥ Sometimes you might see some white mould on your compost. **This is not harmful** to your plants and will disappear naturally.
- ♥ For all ericaceous (acid-loving) plants we strongly recommend using **Miracle-Gro® Peat Free Premium Azalea, Camellia, Rhododendron Ericaceous Plants Compost**.

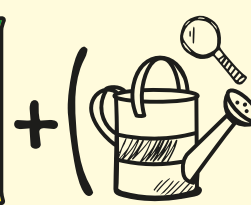
CARING FOR PLANTS & THE PLANET

PEAT FREE + TLC = BETTER (PLANTS+ PLANET)

GOING PEAT FREE MEANS:



A few more bits in the bag



A check before you water



A feed when needed



Better for your plants, better for the planet

NOT ALL PEAT FREE COMPOST IS CREATED EQUAL
#FORPLANTSFORPLANET

RESPONSIBLE SOURCING

We are actively working on improving the responsible sourcing profile of our compost mixes year on year. Miracle-Gro® compost contains forest by-products, carefully processed to help you grow plants that improve your environment and make the world a more beautiful place.

With our partners we have **restored more than 3,000 hectares of peatland** in the past 30 years.

RESPONSIBILITY INDEX



For further information, scan the QR code or visit: responsiblesourcing.hta.org.uk



THIS BAG IS MADE FROM 60% RECYCLED MATERIAL



RECYCLE AT RECYCLING POINT
Don't recycle at home

HEALTH, SAFETY & STORAGE ADVICE

- ♥ Use in a well ventilated place and avoid breathing in dust.
- ♥ Always wear gloves.
- ♥ Wash hands after use.
- ♥ Open bag carefully and reseal after use.
- ♥ Keep the bag closed when in storage to prevent drying out.
- ♥ Storage from one year to another may affect performance.
- ♥ Store in a cool place, away from direct sunlight.
- ♥ Keep away from pesticides.



10 litres when filled – volume may reduce by up to 10%*



We are proudly supporting **GREENFINGERS CHARITY***2

for more information visit **miracle-gro.co.uk** or call **01276 401300**



Evergreen Garden Care UK Ltd, 1 Archipelago, Lyon Way, Frimley, Surrey GU16 7ER
EU Importer: Evergreen Garden Care France SAS, 4 Allée des Séquoias, 69760 LIMONEST, FRANCE, Tel: +353 818 882 479

Made under licence from OMS Investments, Inc. Miracle-Gro® is the trademark of OMS Investments, Inc.

*Registered Charity Number 1076640

*See code of practice at www.growingmedia.co.uk



Ordinary Garden Soil

Miracle-Gro® Premium Peat Free All Purpose Compost

GUARANTEED GROWS PLANTS TWICE AS BIG!*

*Our scientific trials prove that **Miracle-Gro Premium Peat Free All Purpose Compost** grows plants **twice as big** as ordinary garden soil.

BGXXXX