

# Miracle-Gro®

## PEAT FREE

PREMIUM

# Orchid Compost

## ROOTED IN SCIENCE



### ORCHID FORMULA

Large pieces of high quality pine bark produce a free-draining structure for **healthy root growth**.



### pH BALANCED

Contains a special formula with low pH for shiny green leaves.



### 11 VITAL NUTRIENTS

This compost contains a careful balance of **11 vital nutrients** that help your plants to grow strong and healthy - including nitrogen for green growth, phosphorus for healthy roots and potassium to give great flowers and fruiting.

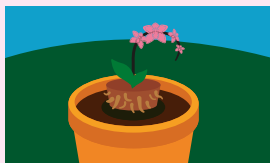
## HOW TO USE



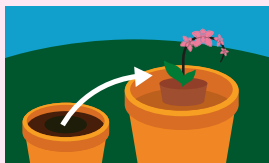
**ALWAYS WEAR GLOVES**

Ideal for orchids. Perfect for use in pots, containers and hanging baskets.

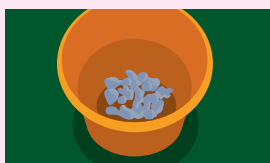
### REPOTTING



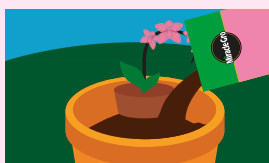
Remove the plant from its existing pot. Divide the plant if appropriate.



**Remove any dead roots.** Select a new pot that is one size larger (or smaller for each division).



Cover the base of the pot with broken crocks or gravel.



Add a layer of the compost. Place the orchid in the pot so the **crown is just below the rim**.



Place more compost between and around the roots, tapping the pot to settle the compost.



**Water thoroughly** with clean, tepid rainwater. Support with a cane if necessary.

- After **2 or 3 years** most orchids will have filled their pot and will need re-potting.
- After re-potting, place the orchid in a shaded spot that is constantly humid. Most orchids appreciate natural light, but not direct sunlight.
- WATERING:** Keep the compost moist (but not too wet) using clean, tepid rainwater.
- FEEDING:** Start feeding after 4 weeks using **Miracle-Gro® Orchid Plant Food** and feed regularly during the growing season. Stop feeding completely during the winter.

## HOW MUCH COMPOST IS IN THIS BAG?



MEDIUM POTS  
22 cm (9")

LARGE POT  
25 cm (10")

HANGING BASKET  
30 cm (12")

## USEFUL TIPS

- For continued fantastic results we recommend that you begin feeding with **Miracle-Gro® Orchid Plant Food** after 4 weeks.
- Compost should be **kept moist** at all times and not allowed to dry out. Avoid plants sitting in water.
- Use the compost directly from the bag. **Do not mix with other materials.**
- The needs of different orchids vary significantly. Consult specialist publications or go to [www.lovethegarden.com](http://www.lovethegarden.com) to make sure you are giving your plant the correct care.
- Sometimes you might see some white mould on your compost. **This is not harmful** to your plants and will disappear naturally.

## CARING FOR PLANTS & THE PLANET

# PEAT FREE + TLC = BETTER (PLANTS+ PLANET)

### GOING PEAT FREE MEANS:



A few more bits in the bag



A check before you water



A feed when needed



Better for your plants, better for the planet

**NOT ALL PEAT FREE COMPOST IS CREATED EQUAL**  
#FORPLANTSFORPLANET

## RESPONSIBLE SOURCING

We are actively working on improving the responsible sourcing profile of our compost mixes year on year. Miracle-Gro® compost contains forest by-products, carefully processed to help you grow plants that improve your environment and make the world a more beautiful place.

With our partners we have **restored more than 3,000 hectares of peatland** in the past 30 years.

### RESPONSIBILITY INDEX



For further information, scan the QR code or visit: [responsiblesourcing.hta.org.uk](http://responsiblesourcing.hta.org.uk)



**THIS BAG IS MADE FROM 60% RECYCLED MATERIAL**



RECYCLE AT RECYCLING POINT

Don't recycle at home

## HEALTH, SAFETY & STORAGE ADVICE

- Use in a well ventilated place and avoid breathing in dust.
- Always wear gloves.
- Wash hands after use.
- Open bag carefully and reseal after use.
- Keep the bag closed when in storage to prevent drying out.
- Storage from one year to another may affect performance.
- Store in a cool place, away from direct sunlight.
- Keep away from pesticides.



10 litres when filled – volume may reduce by up to 10%\*3



5 010272 194104 >



greenfingers charity

We are proudly supporting **GREENFINGERS CHARITY\*2**

for more information visit **miracle-gro.co.uk** or call **01276 401300**



Evergreen Garden Care UK Ltd, 1 Archipelago, Lyon Way, Frimley, Surrey GU16 7ER  
EU Importer: Evergreen Garden Care France SAS, 4 Allée des Séquoias, 69760 LIMONEST, FRANCE, Tel: +353 818 882 479  
Made under licence from OMS Investments, Inc.  
Miracle-Gro® is the trademark of OMS Investments, Inc.  
\*2Registered Charity Number 1076640  
\*3See code of practice at [www.growingmedia.co.uk](http://www.growingmedia.co.uk)



Ordinary Garden Soil

Miracle-Gro® Premium Peat Free All Purpose Compost

## GUARANTEED GROWS PLANTS TWICE AS BIG!\*

\*Our scientific trials prove that **Miracle-Gro Premium Peat Free All Purpose Compost** grows plants **twice as big** as ordinary garden soil.

BCXXXX