

Fast Action ROUNDUP® Ready-To-Use Weedkiller

is inactivated on contact with the soil and active ingredient is then broken down by soil micro-organisms, to allow replanting. It is a multi-purpose weedkiller that kills annual and deep rooted weeds, including:

- ✓ GRASSES
- ✓ DANDELIONS
- ✓ DOCKS
- ✓ NETTLES
- ✓ GROUND ELDER
- ✓ BINDWEED
- ✓ THISTLES

INSTRUCTIONS FOR USE FOR USE ONLY AS A HOME GARDEN WEEDKILLER. READ ALL SAFETY INSTRUCTIONS BEFORE USE.

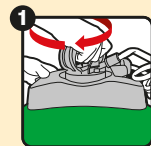
WHEN TO USE



- For best results apply in warm, dry conditions (APR-NOV).
- Spray at any time when the weeds are actively growing and have adequate leaf area to absorb the spray.
- Rain within 6 hours of spraying reduces effectiveness and repeat treatment may be necessary.
- Apply in calm conditions to avoid drift onto cultivated plants.
- Leave weeds 7 days before digging or replanting, for the weedkiller to move to the roots.
- Maximum number of treatments: 1 per year.

HOW TO USE

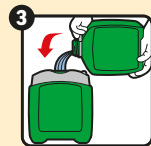
SHAKE WELL BEFORE USE. As good practice, we recommend wearing waterproof gloves and gardening footwear.



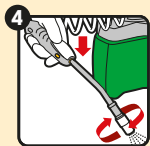
To refill, remove the pump mechanism by unscrewing in an anti-clockwise direction.



Remove the tamper-evident closure on the refill pack. After use, replace the lid of the refill for the next use.



Follow the instructions of the Pump 'N' Go sprayer or those supplied by the manufacturer of your garden sprayer. Pour the required content of the refill pack into your clean, empty Pump 'N' Go sprayer or a dedicated weedkiller sprayer.



Rotate nozzle to 'spray' or 'stream'. Aim 50 cm from target weed and press white trigger. Spray to lightly wet the leaves avoiding run off. Rotate nozzle to 'stop' after use.

- Treat established perennial weeds at the start of flowering to give best results.
- Spray nettles/ground elder when new leaves have unfolded fully in late spring.
- Weeds may show first effects from a few days up to 4 weeks, depending on the weather and type of weed.
- Repeat application if necessary, should new growth appear.
- Maximum individual dose: 250 ml/7.5 m².

WHERE TO USE



- For areas not intended to bear vegetation, unwanted vegetation.
- Controls most weeds around the garden, e.g. gravel areas, paths, drives, hard surfaces, patios, tarmac, along fences and for edging lawns.
- Can be used to clean up weedy ground before planting vegetables, flowers, bushes and trees, and to renovate overgrown areas.
- Do not use on lawns or other wanted plants unless you want to kill them.

RESTRICTIONS

- Avoid contact by spray and spray drift with cultivated plants and desired vegetation.
- To avoid transfer to lawns and other desired vegetation, do not walk into treated areas until the product has dried.

SAFETY INSTRUCTIONS

Protection during/in use: KEEP OFF SKIN. DO NOT BREATHE SPRAY. WASH OFF SPLASHES IMMEDIATELY. WASH HANDS AND EXPOSED SKIN AFTER USE.

Environmental protection: Do not contaminate ponds, waterways or ditches with the product or used container. Do not empty into drains. Direct spray away from ponds and other surface water bodies. Use appropriate containment to avoid environmental contamination.

Storage and disposal: KEEP PRODUCT IN ORIGINAL CONTAINER, tightly closed in a safe place. KEEP AWAY FROM FOOD, DRINK AND ANIMAL FEEDING STUFFS. EMPTY CONTAINER COMPLETELY and dispose of safely. Do not re-use empty containers.

Poisons information: For information or to report a poisoning incident in Ireland, contact The National Poisons Information Centre (01 8092166), retain the label for reference.

RISK & SAFETY INFORMATION

TO AVOID RISKS TO HUMAN HEALTH AND THE ENVIRONMENT, COMPLY WITH THE INSTRUCTIONS FOR USE.

- Read carefully and follow all instructions.
- Keep out of reach of children.
- Do not eat, drink or smoke when using this product.
- If medical advice is needed, have product container or label at hand.
- For the UK only: Dispose of contents/container to a household waste recycling centre as hazardous waste except for empty containers which can be disposed of in the dustbin. Contact your local council for details.
- For the EU only: Dispose of contents/container to a household waste recycling centre as hazardous waste except for triple rinsed empty containers, which can be disposed of by recycling or in the dustbin. Contact your local council for details.

MAPP No. 18679 PCS No. 01669

*Active ingredient breaks down naturally in soil.

Evergreen Garden Care UK Ltd,
1 Archipelago, Lyon Way, Frimley,
Surrey, GU16 7ER, England
Telephone: +44 (0)1276 401 300
For more information visit:
www.roundup-garden.com
EU Importer
Evergreen Garden Care France SAS,
4 Allée des Séquoias,
69760 LIMONEST, FRANCE.
Tel: +353 818 882 479

Contains 7.2 g/L (0.72% w/w) of Glyphosate as a ready to use solution.

ROUNDUP® is a registered trademark and used under licence.



FIND OUT
MORE ONLINE



Keep children and pets
away from treated areas
until spray has dried

PROTECT FROM FROST



5 Litre e



5 017676 016445 >