

ROUNDUP® Speed Ultra

MAPP No. 18692 PCS No. 06259

is a fast acting weedkiller with no glyphosate* for use on unwanted vegetation. It can be used to kill broad leaved weeds and grasses in paths, drives, patios and around the bases of roses, ornamental shrubs and trees, including:

- BINDWEED**
- NETTLES**
- SOW THISTLE**
- FAT HEN**
- BLACK NIGHTSHADE**
- CRABGRASS**
- ANNUAL RYEGRASS**

*** THIS CLAIM IS PROVIDED TO HELP DISTINGUISH FROM OTHER FORMULAS THAT MAY CONTAIN GLYPHOSATE.**

INSTRUCTIONS FOR USE

FOR USE ONLY AS A HOME GARDEN WEEDKILLER. READ ALL SAFETY INSTRUCTIONS BEFORE USE.

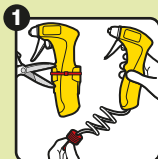
WHEN TO USE

- For best results treat small weeds at an early stage of growth and apply in warm, dry conditions (MAR-OCT).
- Spray at any time when the weeds are actively growing and have adequate leaf area to absorb the spray.
- A repeat treatment may be necessary if rain or drought conditions are expected.
- Apply in calm conditions to avoid drift onto cultivated plants.
- Treated areas can be re-planted/re-seeded a day after treatment.
- Maximum number of treatments: 4 per year.

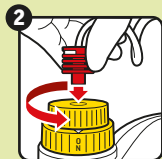


HOW TO USE

As good practice, we recommend wearing waterproof gloves and gardening footwear.



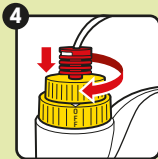
Cut the plastic tie connecting the sprayer to the bottle with scissors. Remove sprayer and pull out the red connector.



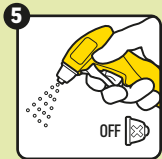
Insert red connector into the top of the cap and click in place. Press and twist the cap anti clockwise to 'ON' position (1/2 of a turn).



Turn the sprayer nozzle to 'NARROW' (1/4 of a turn left) and squeeze the trigger a few times to build pressure. Spray weeds evenly, ensuring coverage on all the leaves.



After use, press and twist the top of the cap clockwise to the 'OFF' position.



Squeeze the sprayer trigger to empty nozzle. Turn nozzle to 'X' (OFF) and replace sprayer in the holder without disconnecting the red connector.

- 3L to treat 90 m². Apply at no more than 100 ml/m². • Repeat treatment if necessary after a minimum of 14 days where re-growth occurs. • Allow the spray to dry before walking or playing on treated areas.
- Treat established weeds before the start of flowering. • Spray nettles and ground elder when new leaves have unfolded fully in late spring. • Weeds may show first visible results within an hour of spraying, depending on weather conditions and the type of weed.

WHERE TO USE



- For use on unwanted vegetation and areas not intended to bear vegetation.
- Controls most weeds around the garden, e.g. gravel areas, paths, drives, hard surfaces, patios, tarmac, along fences and for edging lawns.
- Can be used to clean up weedy ground before planting vegetables, flowers, bushes and trees, and to renovate overgrown areas.
- Do not use on lawns or other plants you want to keep.

RESTRICTIONS

- Avoid contact by spray and spray drift with cultivated plants and desired vegetation.
- To avoid transfer to lawns and other desired vegetation, do not walk into treated areas until the product has dried.
- **Caution:** ROUNDUP® Speed Ultra kills all green plant growth including lawn grasses. DO NOT apply to lawns and plants you want to keep.

SAFETY INSTRUCTIONS

Protection during/in use: Avoid contact with eyes. IN CASE OF CONTACT WITH EYES, RINSE IMMEDIATELY with plenty of water and seek medical advice. If swallowed, seek medical advice immediately and show this container or label. WASH OFF SPLASHES IMMEDIATELY. WASH HANDS AND EXPOSED SKIN AFTER USE.

Environmental protection: Do not apply when rainfall is expected within 6 hours of application. Risk to non-target insects or other arthropods. Dangerous to bees. To protect bees and pollinating insects do not apply to plants when in flower. Do not use where bees are actively foraging. Do not apply when flowering weeds are present. Direct spray away from ponds and other surface water bodies. Use appropriate containment to avoid environmental contamination.

Storage and disposal: KEEP OUT OF THE REACH OF CHILDREN AND PETS. KEEP PRODUCT IN ORIGINAL CONTAINER, tightly closed in a safe place. Keep away from food, drink and animal feeding stuffs. EMPTY CONTAINER COMPLETELY and dispose of safely. Do not re-use empty bottle.

Poisons information: For information or to report a poisoning incident in Ireland, contact The National Poisons Information Centre (01 8092166), retain the label for reference.

RISK & SAFETY INFORMATION

TO AVOID RISKS TO HUMAN HEALTH AND THE ENVIRONMENT, COMPLY WITH THE INSTRUCTIONS FOR USE.

- Read carefully and follow all instructions.
- Keep out of reach of children. Keep only in original container.
- If medical advice is needed, have product container or label at hand.
- Do not contaminate water with the product or its container.
- DO NOT EMPTY INTO DRAINS, SINKS OR OTHER WATER POINTS.
- Dispose of contents/container to a household waste recycling centre as hazardous waste except for empty containers which can be disposed of by recycling. Contact your local council for details.

MAPP No. 18692 PCS No. 06259

Evergreen Garden Care UK Ltd,
1 Archipelago, Lyon Way, Frimley, Surrey, GU16 7ER, England
Telephone: +44 (0)1276 401 300
For more information visit: www.roundup-garden.com

EU Importer
Evergreen Garden Care France SAS,
4 Allée des Séquoias, 69760 LIMONEST, FRANCE,
Tel: +353 818 882 479

Contains 60 g/L Acetic acid in a ready to use solution.

ROUNDUP® is a registered trademark and used under licence.

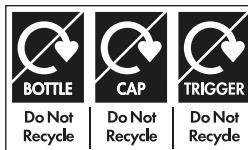


FIND OUT
MORE ONLINE



Keep children and pets
away from treated areas
until spray has dried

PROTECT FROM FROST



3 Litre e

