

UK's LEADING
WEEDKILLER BRAND*

ROUNDUP® Weedkiller
Total Optima kills:

PUMP 'N GO
PRESSURE SPRAYER

MAPP No. 20721 PCS No. 06655

✓ CLOVER

✓ CHICKWEED

✓ COMMON GROUNDSEL

✓ BLACK MEDICK

✓ ANNUAL MEADOW-GRASS

* THIS CLAIM IS PROVIDED TO HELP DISTINGUISH FROM OTHER FORMULAS THAT MAY CONTAIN GLYPHOSATE.

INSTRUCTIONS FOR USE

FOR USE ONLY AS AN AMATEUR WEEDKILLER. READ ALL SAFETY INSTRUCTIONS BEFORE USE.

- ✓ Use all around the garden on flower beds, borders and veg patches.
- ✓ Kills weeds in 24 hours under optimal conditions.
- ✓ Fast acting, the first visible effects may be seen within 2-3 hours.
- ✓ Kills a broad range of annual weeds.
- ✓ **Active ingredient naturally breaks down in soil.
- ✓ Soil is ready for replanting in 3 days.

WHEN TO USE

- Apply in warm, calm, dry, conditions during April - November when weeds are actively growing.
- Do not apply when there is a risk of frost or drought as weeds will not be actively growing.
- Reapply if it rains within 3 hours of application.
- Reapply 7 to 21 days if required.
- Maximum 4 applications per year.



HOW TO USE

SHAKE WELL BEFORE USE. Wear gloves and enclosed footwear. This pack treats up to 165 m². Application rate: 300 ml per 10 m².



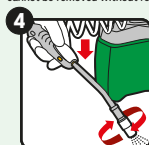
CONNECT - Cut the white tie to release the hose and wand. Connect the hose to the pack as shown. This is a quick couple system, so once in place it cannot be removed without force.



EXTEND WAND - Lift sprayer off the bottle, push the yellow button while pulling the lance into spray position.



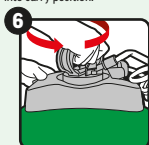
PUMP - Pump the handle 25-30 times for up to 10 minutes of pressure spray. After pumping, push the handle down and turn clockwise to lock into carry position.



SPRAY 'N GO - Adjust spray pattern by turning the nozzle. Aim 50 cm from target weed and press white trigger. Spray to lightly wet the leaves avoiding run off.



AFTER USE - Push the yellow button and retract the wand to its original position, clip it onto the top of the pack for storage and to prevent accidental release of spray solution.



STORE - Push the pump handle down, turn both the pump handle and cap anti-clockwise to relieve pressure, then retighten before storage.

WHERE TO USE



- Use to kill weeds on flower beds, borders, vegetable patches, around roses, shrubs, hedges, greenhouses and along fences. Ideal before cropping and ground clearance before cultivation.
- Can be used to clean up weedy ground before planting vegetables, flowers, bushes and trees, and to renovate overgrown areas.
- For the control of weeds around ornamental garden plants, trees and in areas not intended to bear vegetation.
- Most effective when applied to newly established weeds or those less than 10-15 cm tall.
- Do not direct spray or allow spray drift onto cultivated plants and lawn as this product destroys all green plant parts.

SAFETY INSTRUCTIONS

Protection during/in use:

KEEP OFF SKIN/AWAY FROM EYES. WASH OFF SPLASHES IMMEDIATELY. WASH HANDS AND EXPOSED SKIN AFTER USE.

Environmental protection:

To protect aquatic organisms and non-target plants do not apply on impermeable hard surfaces such as asphalt, concrete, cobblestones, tarmac, paving, patio and other situations with a high risk of run-off. Direct spray away from ponds and other surface water bodies. Risk to non-target insects or other arthropods. Avoid improper release into the environment. Do not contaminate water with the product and its container. Do not empty into drains.

Storage and disposal:

KEEP PRODUCT IN ORIGINAL CONTAINER, tightly closed in a safe place. Protect from frost. KEEP AWAY FROM FOOD, DRINK AND ANIMAL FEEDING STUFFS. KEEP PRODUCT AWAY FROM CHILDREN AND PETS. Do not re-use container for any other purpose.

RISK & SAFETY INFORMATION

TO AVOID RISKS TO HUMAN HEALTH AND THE ENVIRONMENT, COMPLY WITH THE INSTRUCTIONS FOR USE.

- Read carefully and follow all instructions.
- Keep out of reach of children.
- Do not eat, drink or smoke when using this product.
- If medical advice is needed, have product container or label at hand.
- **For the UK only:** Dispose of contents/container to a household waste recycling centre as hazardous waste except for empty containers which can be disposed of in the dustbin. Contact your local council for details.
- **For Rol only:** Dispose of contents/container to a household waste recycling centre as hazardous waste except for triple rinsed empty containers, which can be disposed of by recycling or in the dustbin.
- Contains reaction mass of 5-chloro-2-methyl-2H-isothiazol-3-one and 2-methyl-2H-isothiazol-3-one (3:1). May produce an allergic reaction.

MAPP No. 20721 PCS No. 06655

Poisons information: For information or to report a poisoning incident in Ireland, contact The National Poisons Information Centre (01 8092166), retain the label for reference.

*According to GFK Garden Care UK sales data 52 week (Sept 2022).

Evergreen Garden Care UK Ltd,
1 Archipelago, Lyon Way, Frimley, Surrey,
GU16 7ER, England
Telephone: +44 (0)1276 401 300
For more information visit:
www.roundup-garden.com
EU Importer
Evergreen Garden Care France SAS,
4 Allée des Séquoias, 69760 LIMONEST,
FRANCE, Tel: +353 818 882 479

Contains 43.1 g/L Pelargonic acid as an Emulsion, oil in water (EW).



FIND OUT
MORE ONLINE



Keep children and pets
away from treated areas
until spray has dried

ROUNDUP® is a registered trademark and
used under licence.



5 Litre e

