

ROUNDUP® Weedkiller Total Optima kills:

- ✓ **CLOVER** ✓ **CHICKWEED** ✓ **COMMON GROUNDSEL** ✓ **BLACK MEDICK** ✓ **ANNUAL MEADOW-GRASS**

* THIS CLAIM IS PROVIDED TO HELP DISTINGUISH FROM OTHER FORMULAS THAT MAY CONTAIN GLYPHOSATE.

INSTRUCTIONS FOR USE FOR USE ONLY AS AN AMATEUR WEEDKILLER. READ ALL SAFETY INSTRUCTIONS BEFORE USE.

- ✓ Use all around the garden on flower beds, borders and veg patches.
- ✓ Kills a broad range of annual weeds.
- ✓ Kills weeds in 24 hours under optimal conditions.
- ✓ **Active ingredient naturally breaks down in soil.
- ✓ Fast acting, the first visible effects may be seen within 2-3 hours.
- ✓ Soil is ready for replanting in 3 days.

WHEN TO USE

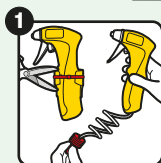
- Apply in warm, calm, dry, conditions during April - November when weeds are actively growing.
- Do not apply when there is a risk of frost or drought as weeds will not be actively growing.
- Reapply if it rains within 3 hours of application.
- Reapply 7 to 21 days if required.
- Maximum 4 applications per year.



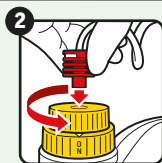
>3 HOURS

HOW TO USE

SHAKE WELL BEFORE USE. Wear gloves and enclosed footwear. This pack treats up to 100 m². Application rate: 300 mL per 10 m².



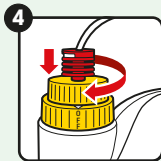
1 Cut the plastic tie connecting the sprayer to the bottle with scissors. Remove sprayer and pull out the red connector.



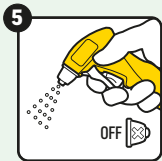
2 Insert red connector into the top of the cap and click in place. Press and twist the cap anticlockwise to 'ON' position (1/2 of a turn).



3 Turn the sprayer nozzle to 'NARROW' (1/2 of a turn left) and squeeze the trigger a few times to build pressure. Spray weeds evenly, ensuring coverage on all the leaves.



4 After use, press and twist the top of the cap clockwise to the 'OFF' position.



5 Squeeze the sprayer trigger to empty nozzle. Turn nozzle to 'X' (OFF) and replace sprayer in the holder without disconnecting the red connector.

WHERE TO USE

- Use to kill weeds on flower beds, borders, vegetable patches, around roses, shrubs, hedges, greenhouses and along fences. Ideal before cropping and ground clearance before cultivation.
- Can be used to clean up weedy ground before planting vegetables, flowers, bushes and trees, and to renovate overgrown areas.
- For the control of weeds around ornamental garden plants, trees and in areas not intended to bear vegetation.
- Most effective when applied to newly established weeds or those less than 10-15 cm tall.
- Do not direct spray or allow spray drift onto cultivated plants and lawn as this product destroys all green plant parts.

SAFETY INSTRUCTIONS**Protection during/in use:**

KEEP OFF SKIN/AWAY FROM EYES. WASH OFF SPLASHES IMMEDIATELY. WASH HANDS AND EXPOSED SKIN AFTER USE.

Environmental protection:

To protect aquatic organisms and non-target plants do not apply on impermeable hard surfaces such as asphalt, concrete, cobblestones, tarmac, paving, patio and other situations with a high risk of run-off. Direct spray away from ponds and other surface water bodies. Risk to non-target insects or other arthropods. Avoid improper release into the environment. Do not contaminate water with the product and its container. Do not empty into drains.

Storage and disposal:

KEEP PRODUCT IN ORIGINAL CONTAINER, tightly closed in a safe place. Protect from frost. KEEP AWAY FROM FOOD, DRINK AND ANIMAL FEEDING STUFFS. KEEP PRODUCT AWAY FROM CHILDREN AND PETS. Do not re-use container for any other purpose.

RISK & SAFETY INFORMATION**TO AVOID RISKS TO HUMAN HEALTH AND THE ENVIRONMENT, COMPLY WITH THE INSTRUCTIONS FOR USE.**

- Read carefully and follow all instructions.
- Keep out of reach of children.
- Do not eat, drink or smoke when using this product.
- If medical advice is needed, have product container or label at hand.
- For the UK only: Dispose of contents/container to a household waste recycling centre as hazardous waste except for empty containers which can be disposed of in the dustbin. Contact your local council for details.
- For RoI only: Dispose of contents/container to a household waste recycling centre as hazardous waste except for triple rinsed empty containers, which can be disposed of by recycling or in the dustbin.
- Contains reaction mass of 5-chloro-2-methyl-2H-isothiazol-3-one and 2-methyl-2H-isothiazol-3-one (3:1). May produce an allergic reaction.

MAPP No. 20721 PCS No. 06655

Poisons information: For information or to report a poisoning incident in Ireland, contact The National Poisons Information Centre (01 8092166), retain the label for reference.

Evergreen Garden Care UK Ltd,
1 Archipelago, Lyon Way, Frimley, Surrey, GU16 7ER, England
Telephone: +44 (0)1276 401 300

For more information visit: roundup-garden.com

EU Importer

Evergreen Garden Care France SAS,
4 Allée des Séquoias, 69760 LIMONEST, FRANCE,
Tel: +353 818 882 479

Contains 43.1 g/L Pelargonic acid as an Emulsion, oil in water (EW).



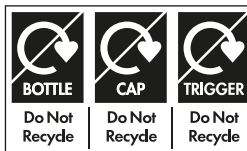
FIND OUT
MORE ONLINE

ROUNDUP® is a registered trademark and used under licence.



Keep children and pets
away from treated areas
until spray has dried

*According to GfK Garden Care UK sales data
52 week (Sept 2022).



3 Litre e

